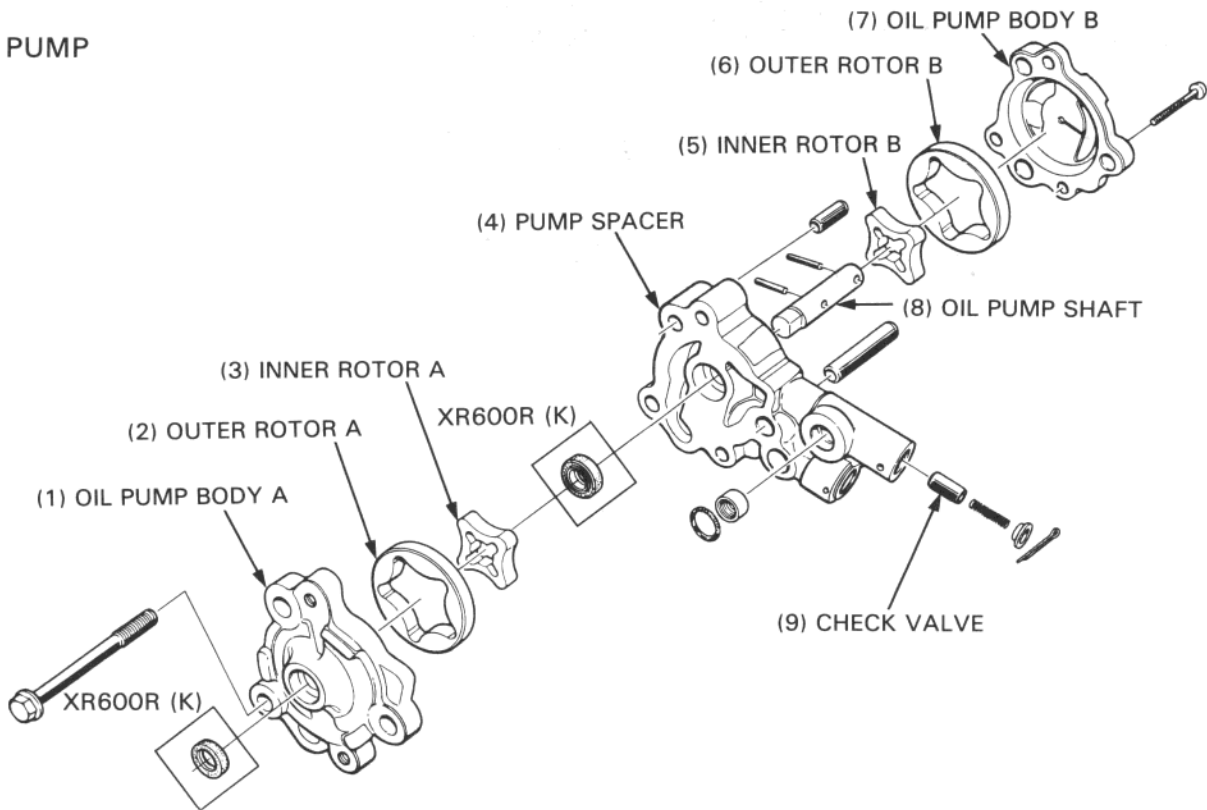


LUBRICATION

OIL PUMP



INSPECTION

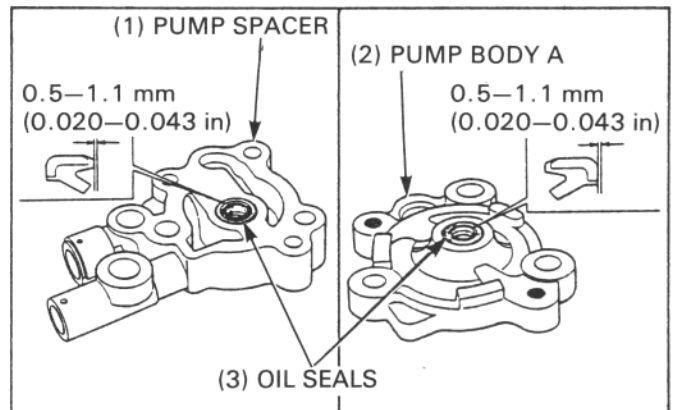
Replace the oil seals if they show any signs of wear or damage.

NOTE

- When removing the oil seal, remark which surface of the oil seal faces out.

Install new oil seals into the holes squarely in the specified depths from the surfaces.

SPECIFIED DEPTHS: 0.5–1.1 mm (0.020–0.043 in)



CARBURETOR

SPECIFICATION

| | B | U | DK |
|-----------------------------|-------------------|-------------------|-------------------|
| Identification No. | PD8AD | PD8AC | PD8EA |
| Main jet | # 165 | # 125 | # 135 |
| Slow jet | # 62 | # 62 | # 62 |
| Float level | 14.5 mm (0.57 in) | 14.5 mm (0.57 in) | 14.5 mm (0.57 in) |
| Pilot screw initial opening | 2 turns out | 2 turns out | 2 turns out |