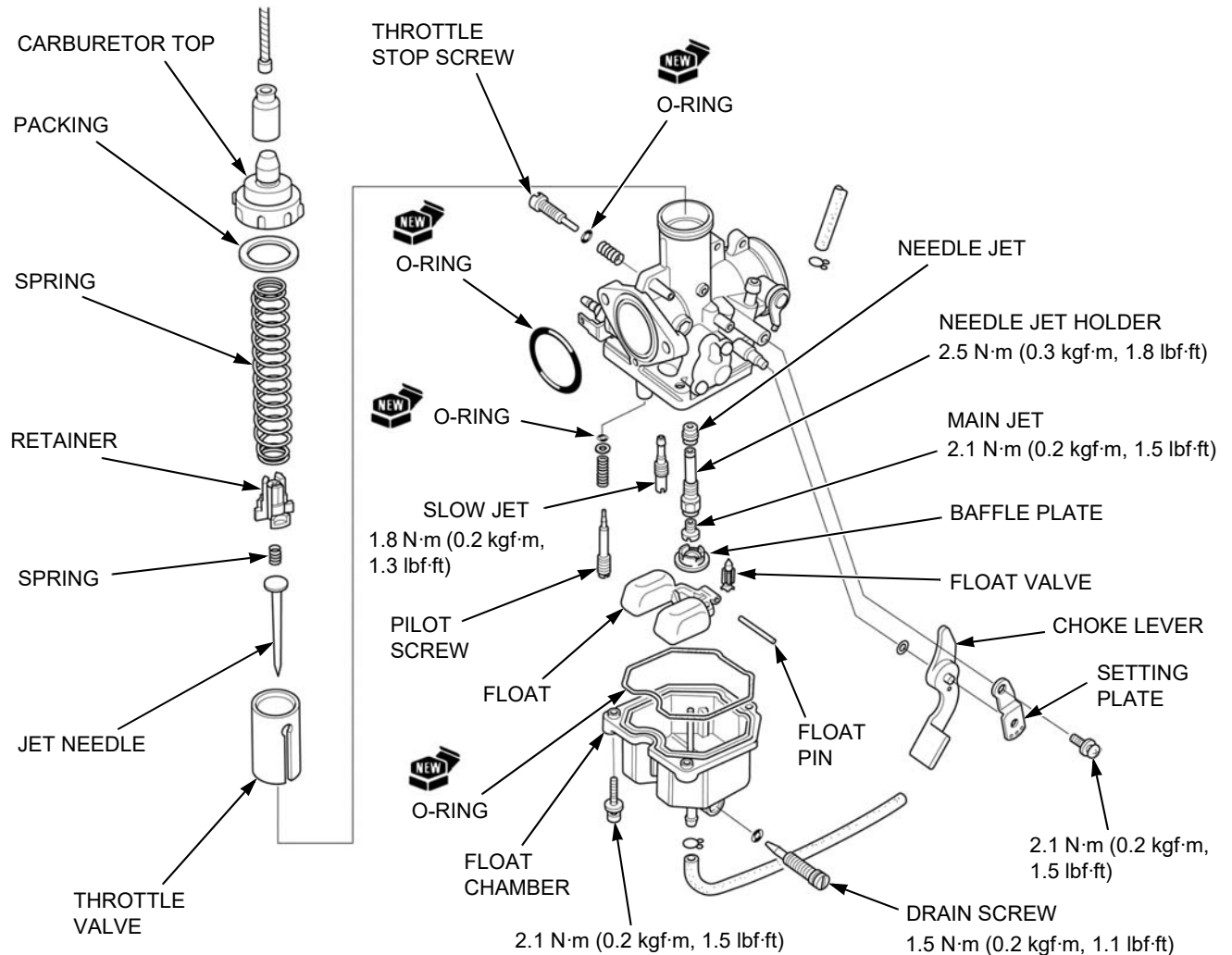


**DISASSEMBLY/ASSEMBLY/
INSPECTION**

Disassemble and assemble the carburetor as following illustration.

NOTE:

- Handle all jets with care. They can easily be scored or scratched.
- Blow open each air and fuel passage in the carburetor body with compressed air.



**AIR CUT-OFF VALVE REMOVAL/INSTALLATION
(XR125LK/LEK)**

Hold the air cut-off valve cover, or the compression spring will jump out of the carburetor.

Remove the two screws [1].

