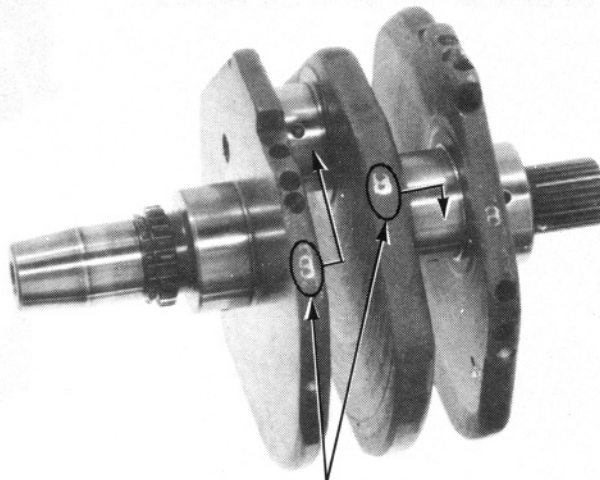


Determine and record the corresponding crankpin O.D. code number (or measure the crankpin O.D.).

NOTE:

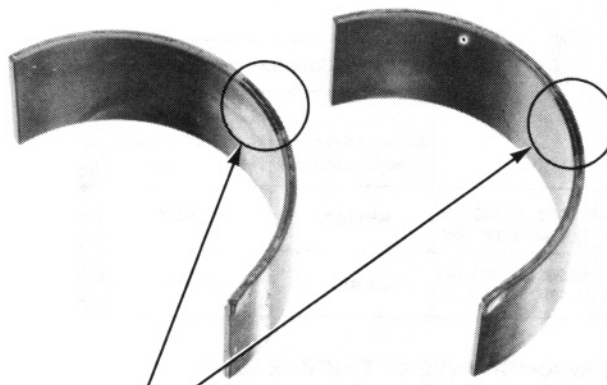
Letters A or B on each crank weight are the codes used for each crankpin O.D.



CRANK PIN O.D. CODE

Cross reference the crankpin and rod codes to determine the replacement bearing color.

		CONNECTING ROD I.D. CODE NO.	
		1	2
CRANK PIN O.D. CODE	A	42.982–42.990mm	F (Pink)
	B	42.974–42.982mm	E (Yellow)
		46.000–46.008mm	E (Yellow)
		46.008–46.016mm	D (Green)



COLOR CODE

BEARING INSERT THICKNESS:

D (Green): 1.495–1.499 mm (0.0589–0.0590 in)

E (Yellow): 1.491–1.495 mm (0.0578–0.0589 in)

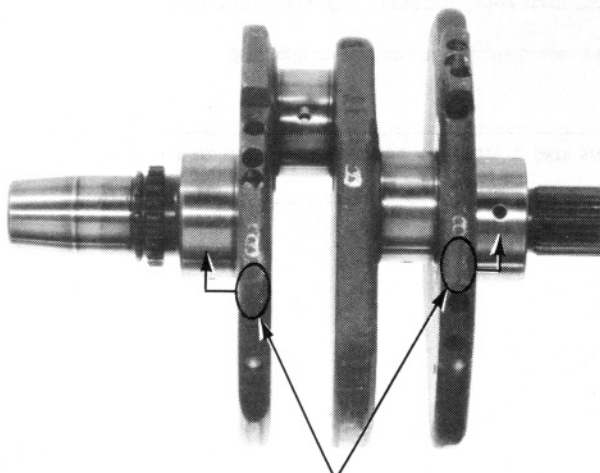
F (Pink): 1.487–1.491 mm (0.0585–0.0587 in)

MAIN BEARING INSERTS

Determine and record the corresponding main journal O.D. codes, (or measure the main journal O.D.).

NOTE:

Letters 1 or 2 on each crank weight are the codes used for each main journal O. D.



MAIN JOURNAL O.D.