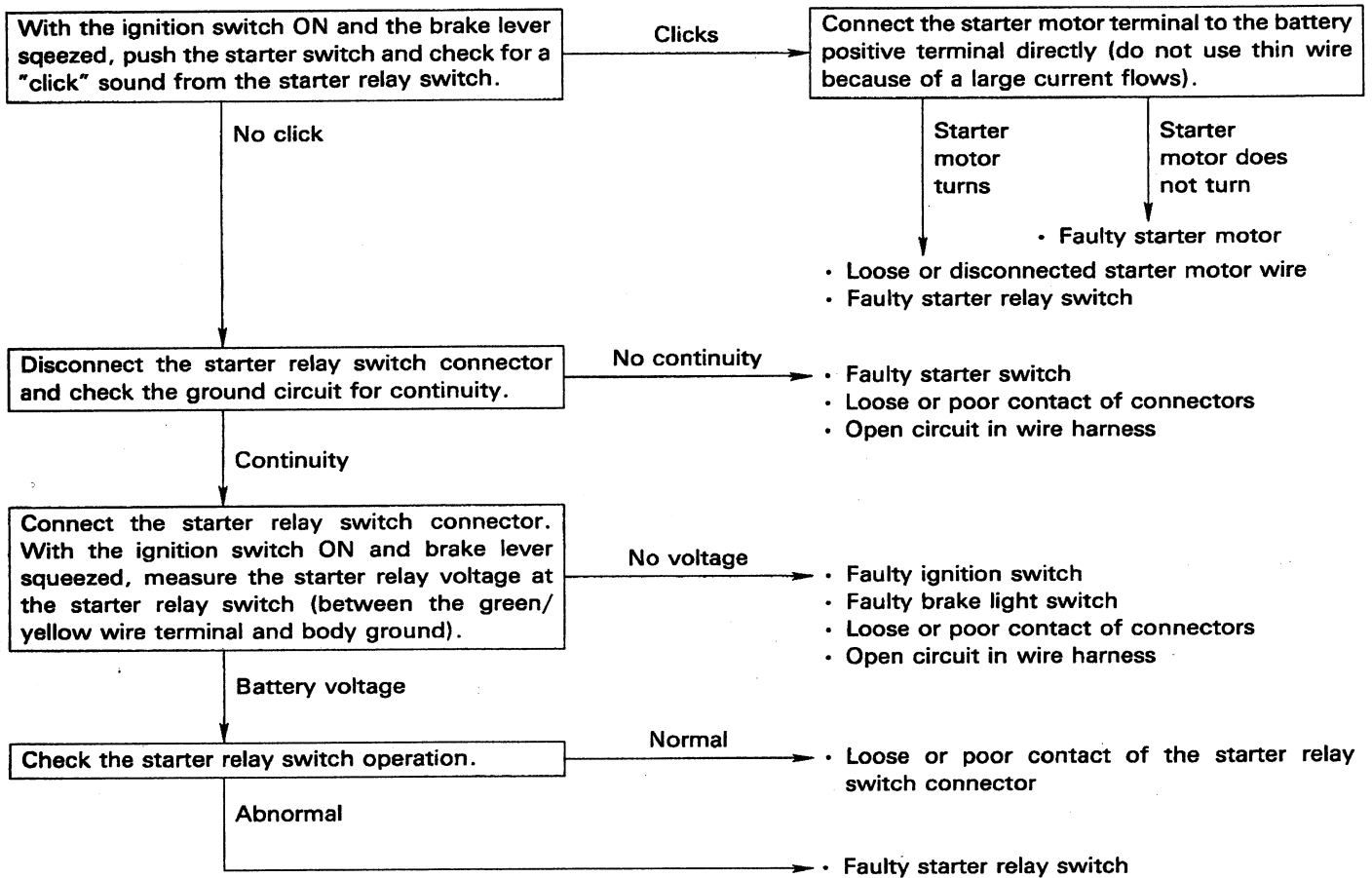


Troubleshooting

Starter motor will not turn

- Check for blown fuse before checking.



Starter motor turns slowly

- Weak battery
- Poorly connected battery wire terminals
- Poorly connected starter motor wire
- Faulty starter motor

Starter motor turns, but engine does not turn

- Faulty starter pinion

Starter motor and engine turn, but engine does not start

- Faulty ignition system
- Engine problem
 - Low compression
 - Fouled spark plug