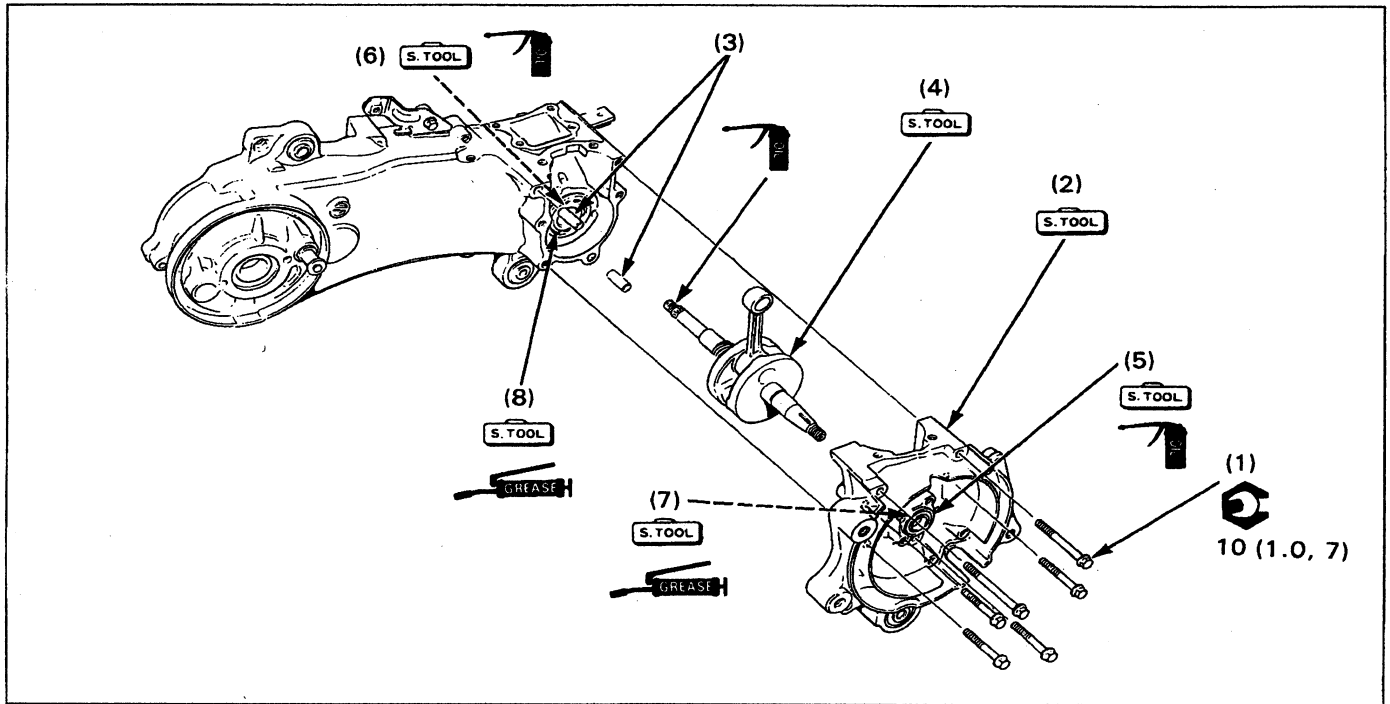


Crankcase Separation/Assembly



Requisite Service

- Refer to page 10-1 for the parts that must be removed before separating the crankcase.

Procedure		Q'ty	Remarks
Separation Order			
(1)	Crankcase bolt	6	
(2)	Right crankcase	1	Separation (page 10-3)
(3)	Dowel pin	2	
(4)	Crankshaft	1	
(5)	Right oil seal	1	Removal (page 10-3)
(6)	Left oil seal	1	
(7)	Right bearing	1	
(8)	Left bearing	1	
Assembly Order			
(7)	Right bearing	1	Installation (page 10-4)
(8)	Left bearing	1	
(4)	Crankshaft	1	
(6)	Left oil seal	1	
(3)	Dowel pin	2	
(2)	Right crankcase	1	Assembly (page 10-5)
(5)	Right oil seal	1	
(1)	Crankcase bot	6	