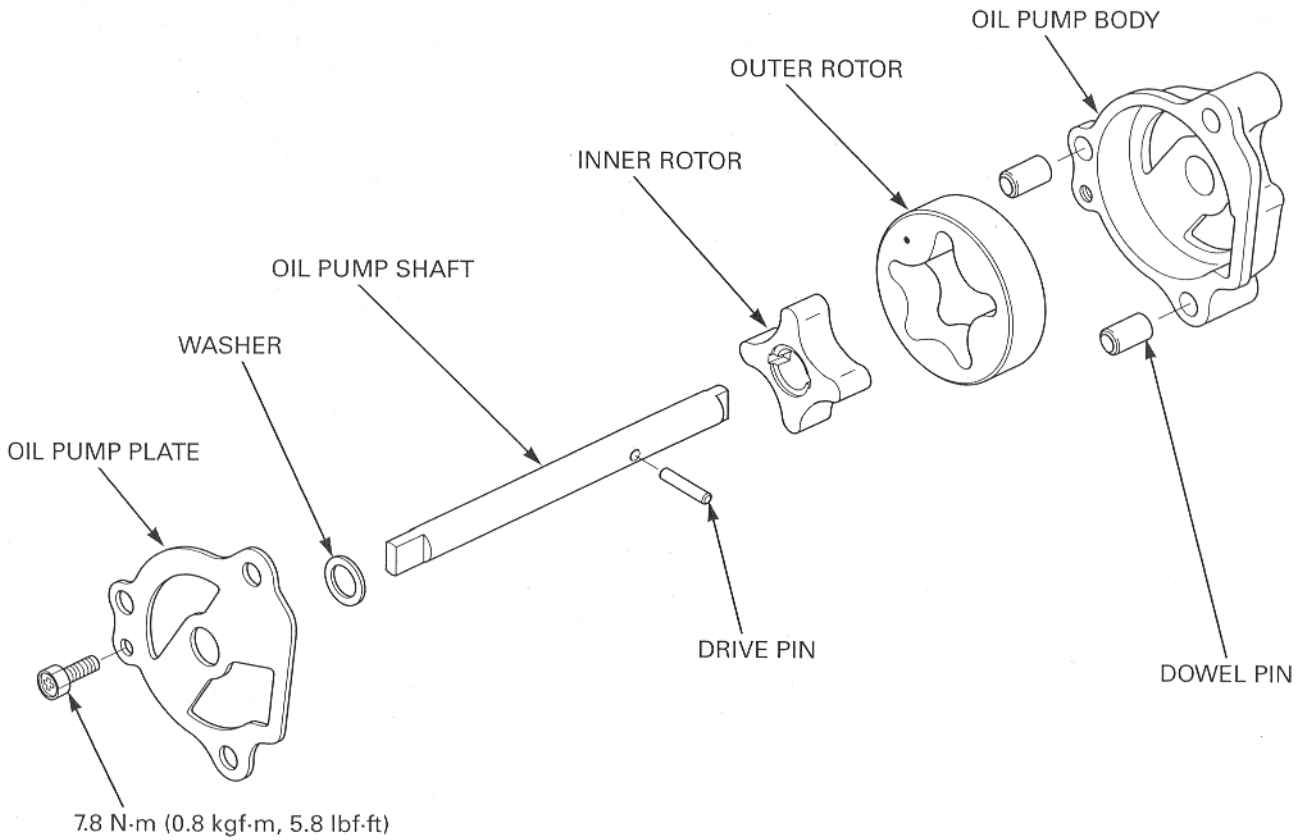


LUBRICATION SYSTEM

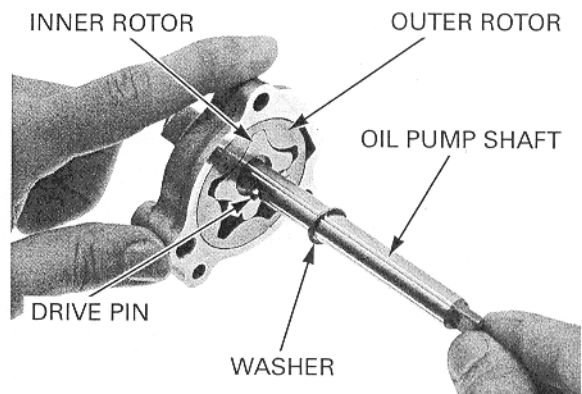
ASSEMBLY

Dip all parts in clean engine oil.



Install the outer rotor into the oil pump body with its punch mark facing the oil pump plate.
Install the inner rotor into the outer rotor with its drive pin groove facing the oil pump plate.
Install the oil pump shaft through the inner rotor and oil pump body.

Install the drive pin into the hole in the oil pump shaft and align the drive pin with the groove in the inner rotor.
Install the thrust washer.



Install the dowel pins.
Install the oil pump plate and tighten the assembly bolt to the specified torque.

TORQUE: 7.8 N-m (0.8 kgf-m, 5.8 lbf-ft)

Check the oil pump operation by turning the pump shaft.
If necessary, reassemble the oil pump.

