

GENERAL INFORMATION

GROUP

1

CONTENTS

1-1 SERIAL NUMBER	1
1-2 KEY SYSTEM	2
1-3 TECHNICAL DATA	3
a. Dimensional drawing	3
b. Specifications	4
c. Driving performance	10
1-4 THREAD SIZE	11
1-5 SERVICE TOOLS	12

1-1 SERIAL NUMBER

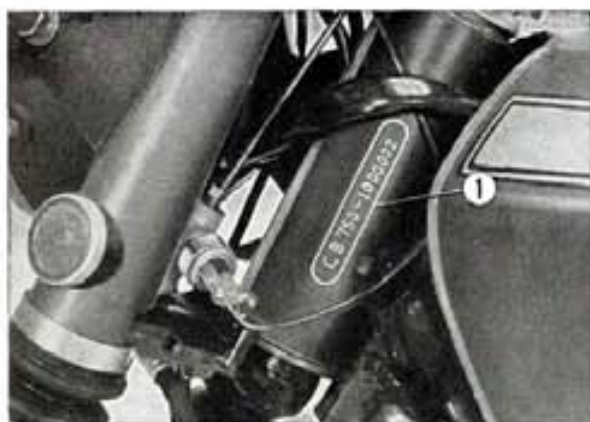


Fig. 1-1 ① Frame serial number



Fig. 1-2 ① Engine serial number

The frame serial number is stamped on the left side of the steering head pipe and engine serial number is located on the top of the crankcase left side. Whenever ordering replacement parts or making inquiries concerning the particular motorcycle, always included the frame or the engine number whichever is applicable. (Fig. 1-1, 2)