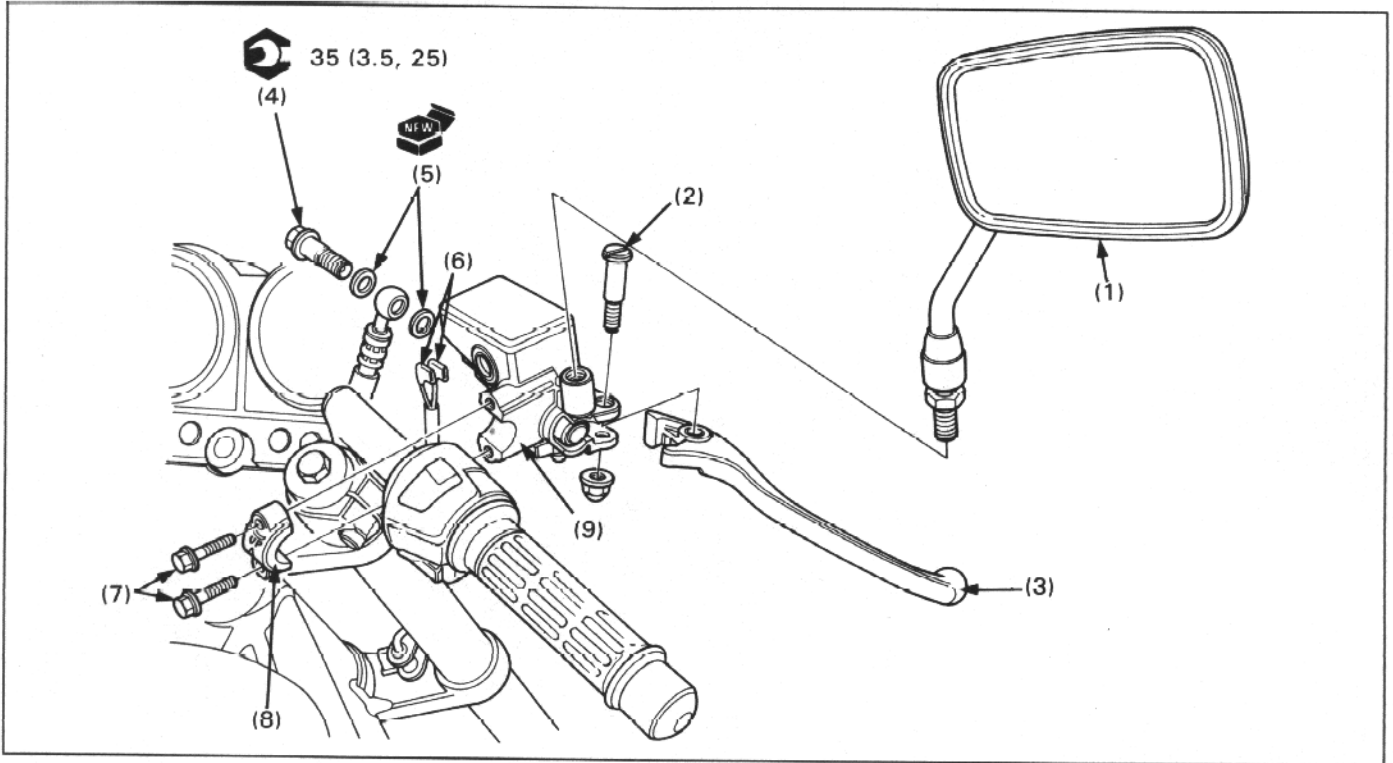


**FRONT MASTER CYLINDER REMOVAL/INSTALLATION**



**REQUISITE SERVICE**

- Air bleeding (section 17 of the Common Service Manual)

PROCEDURE		Q'ty	INSTALLATION REMARKS
<b>REMOVAL ORDER</b>			• Installation is in the reverse order of removal.  Tighten the upper bolt first, then the lower bolt. Face the UP mark upward. Align the holder end with the punch mark on the handlebar.
(1)	Right rearview mirror	1	
(2)	Brake lever pivot bolt	1	
(3)	Brake lever	1	
(4)	Brake hose bolt	1	
(5)	Sealing washer	2	
(6)	Front brake light switch connector	2	
(7)	Master cylinder holder bolt	2	
(8)	Master cylinder holder	1	
(9)	Master cylinder assembly	1	