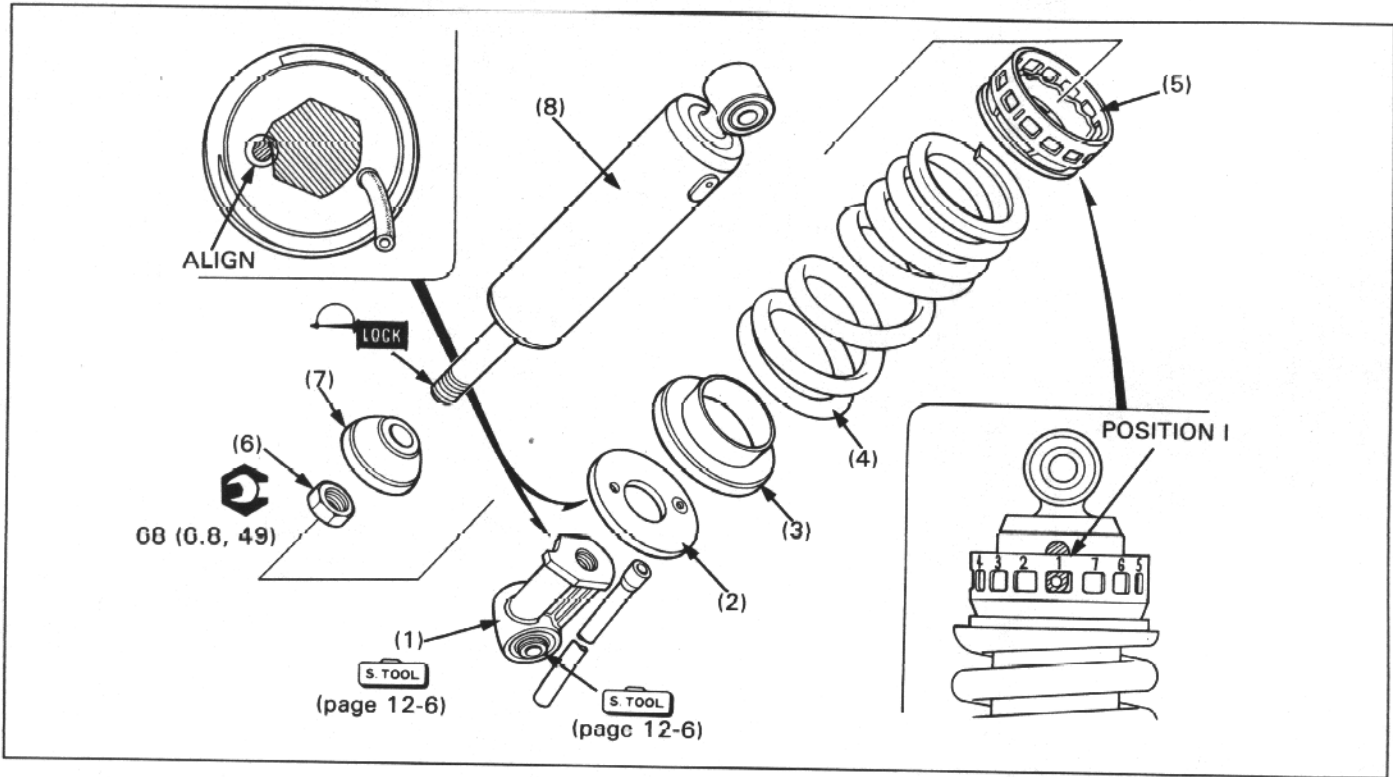


SHOCK ABSORBER DISASSEMBLY/ASSEMBLY



⚠ WARNING

- The shock absorber contains nitrogen under high pressure. Do not allow fire or heat near the shock absorber.
- Before disposal of the shock absorber, release the nitrogen (Step: section 19 of the Common Service Manual; Drilling point: page 1-11)

NOTE

- Adjust the shock absorber to position I (for lightest loads) before removing the shock absorber from the frame.
- For lower joint needle bearing replacement, see next page.

REQUISITE SERVICE

- Shock absorber removal/installation (page 12-4)

PROCEDURE	Q'ty	REMARKS
(1) DISASSEMBLY ORDER		
(1) Lower joint	1	<ul style="list-style-type: none"> • Assembly is in the reverse order of disassembly. NOTE: • Removal/Installation (page 12-6) • At installation, align the lower joint with the seat stopper pin.
(2) Seat stopper	1	
(3) Spring seat	1	
(4) Spring	1	
(5) Adjuster	1	Install with the taper end facing to the adjuster.
(6) Lower joint lock nut	1	
(7) Damper rubber	1	
(8) Damper	1	