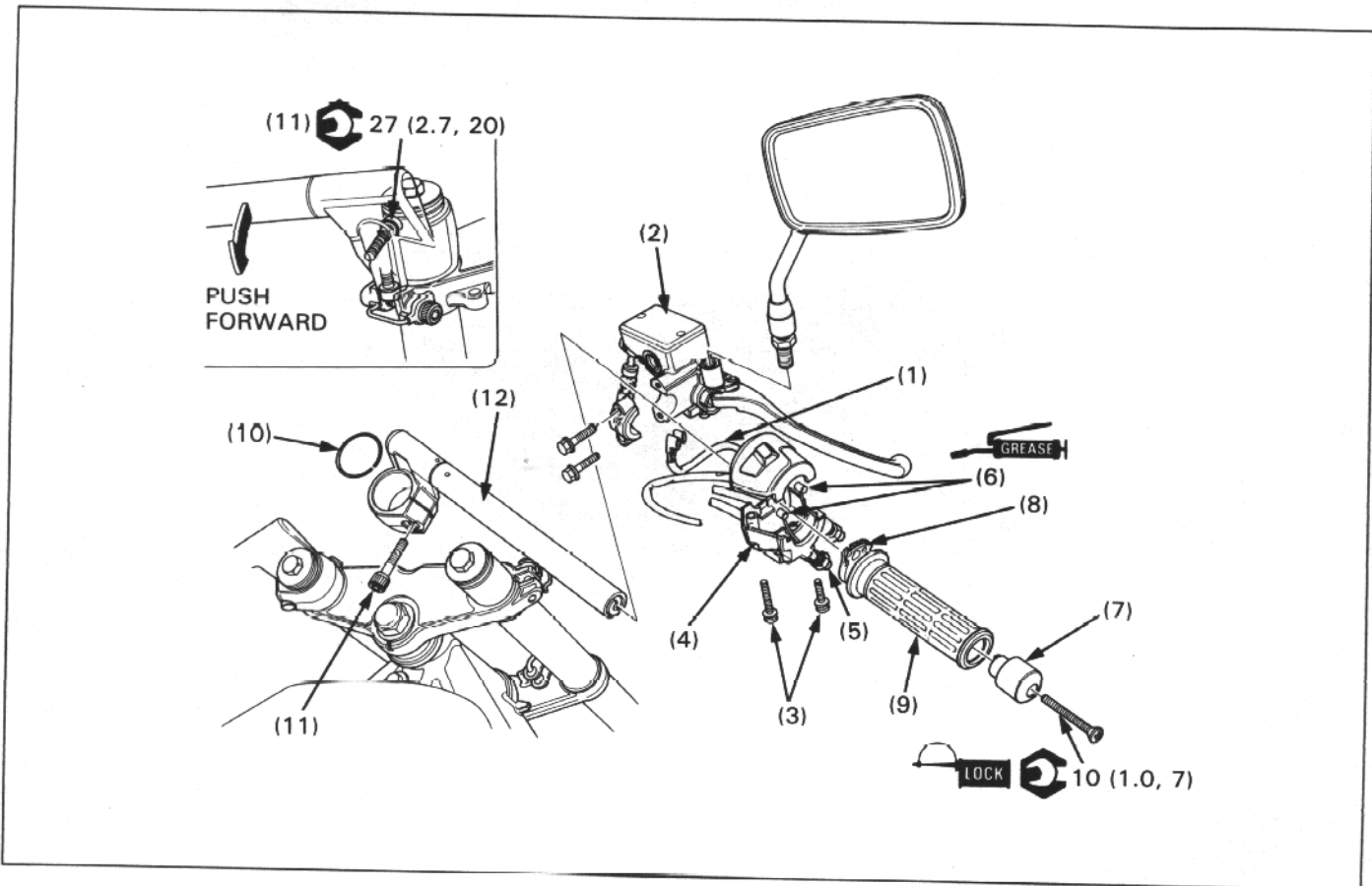


RIGHT HANDLEBAR REMOVAL/INSTALLATION



NOTE

- Using wires, hang the front brake master cylinder at least as high as the position it was originally installed at to prevent air from getting into the master cylinder. Do not twist the brake hose.
- Route the cables and wire harnesses properly (page 1-19).
- Adjust the throttle cable after installation.

PROCEDURE		Q'ty	INSTALLATION REMARKS
REMOVAL ORDER			
(1)	Front brakelight switch connector	2	• Installation is in the reverse order of removal.
(2)	Master cylinder	1	
(3)	Right handlebar switch housing screw	2	Align the holder end with the punch mark on the handlebar and face the holder UP mark upward. Tighten the upper bolt first, then the lower bolt. Tighten the front screw first, then the rear screw.
(4)	Right handlebar switch housing	1	
(5)	Throttle cable nut	1	Don't bend or distort the cables. Align its boss with the inner weight.
(6)	Throttle cable	1	
(7)	Handlebar weight	2	Apply Honda Bond A or Honda Hand Grip Cement (U.S.A. only) to the inside surface of the grip. Install into the fork groove properly.
(8)	Throttle pipe	1	
(9)	Throttle grip	1	Tighten with the handlebar pushing forward. Align the handlebar boss with the top bridge slot.
(10)	Stop ring	1	
(11)	Handlebar pinch bolt	1	
(12)	Right handlebar	1	