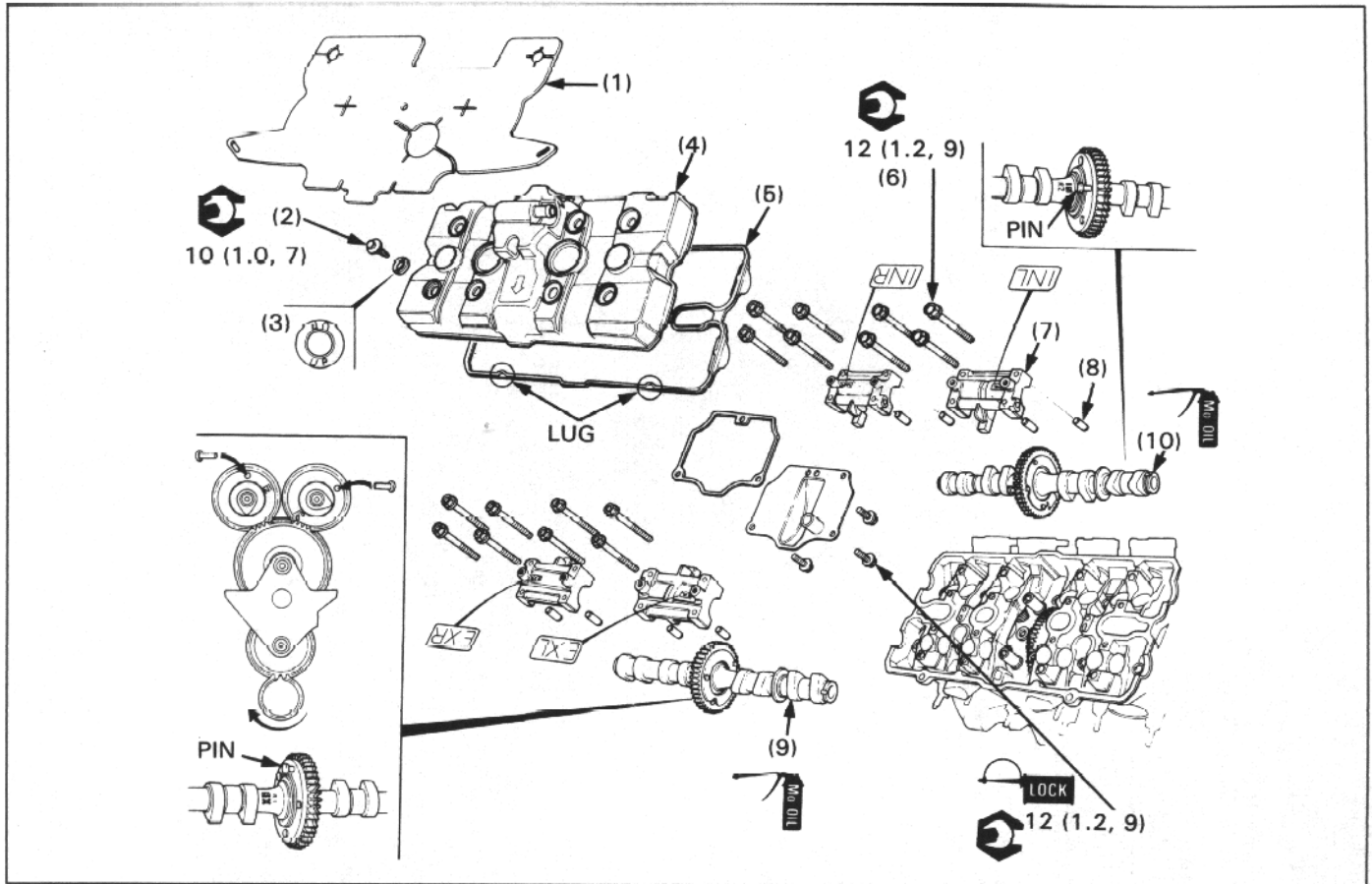


CAMSHAFT REMOVAL/INSTALLATION



REQUISITE SERVICE

- Fuel tank removal/installation (page 2-4)
- Air cleaner case removal/installation (page 6-3)
- Remove the radiator lower mounting bolts and loosen the upper mounting bolt/nut (page 5-5). Swing the radiator forward.

PROCEDURE	Q'ty	REMARKS
REMOVAL ORDER		• Installation is in the reverse order of removal.
(1) Heat guard plate	1	
(2) Cylinder head cover bolt	8	At installation, tighten the bolts in a gradual, crisscross pattern.
(3) Washer	8	Install them with the "UP" mark facing up.
(4) Cylinder head cover	1	Install with the "←" mark forward.
(5) Gasket	1	NOTE: • Apply Three Bond 1521 or equivalent to the head cover and install the gasket onto the cover with tabs facing forward.
(6) Camshaft holder bolt	16	NOTE: • Before removing bolts, turn the flywheel clockwise and insert suitable pins into the cam gear holes to ease the installation of camshaft serrated gears. Take care not to drop pins into the crankcase and that the pins do not interfere with the cylinder head.
(7) Camshaft holder	4	Camshaft installation (page 8-3)
(8) Dowel pin	8	
(9) Exhaust (EX) camshaft	1	
(10) Intake (IN) camshaft	1	