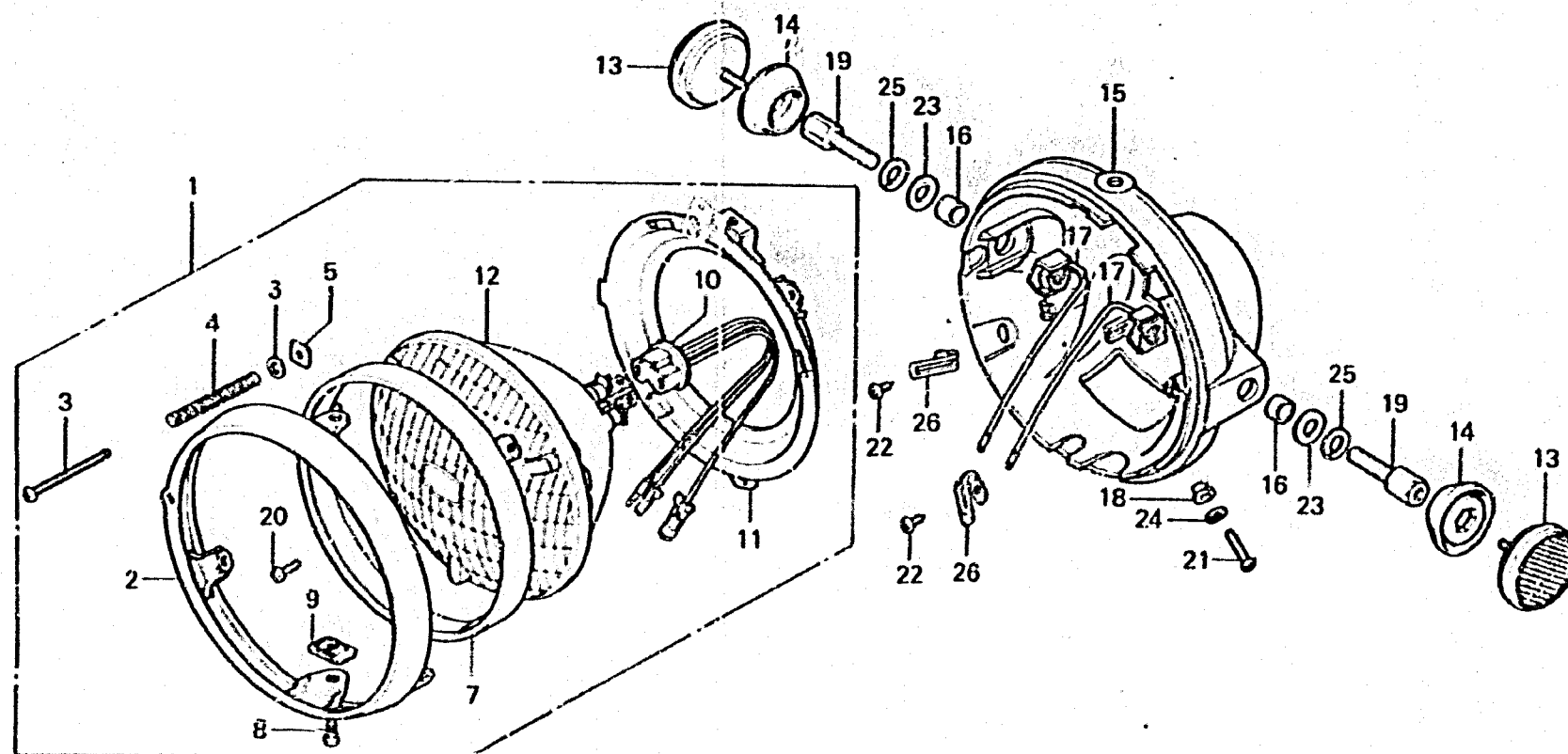


K 7

F-1

# Headlight (A, CM)



B410-8

Service item	F.R.T.	Ref. No.	Part No.	Description	Reqd. No. CB750 F2 F3	Serial No.	Area code
HEADLIGHT CASE	0.3	1	33100-405-671	HEADLIGHT ASSY.	1	1	A,CM
SEALED BEAM UNIT and its related parts	0.2	2	33101-405-671	RIM, HEADLIGHT	1	1	A,CM
HEADLIGHT ASSY./HEADLIGHT	0.1	3	33103-346-670	SCREW, BEAM ADJUST	1	1	A,CM
CORD SOCKET COMP.		4	33107-300-003	SPRING, HEADLIGHT BEAM ADJUSTING	1	1	A,CM
		5	33117-001-023	NUT, HEADLIGHT BEAM ADJUSTING	1	1	A,CM
		6	33119-371-003	WASHER, BEAM ADJUST	1	1	A,CM
		7	33121-405-671	RING, RETAINING	1	1	A,CM
		8	33125-292-670	SCREW, UNIT HOLDER	2	2	A,CM
		9	33128-292-670	NUT, UNIT HOLDER	2	2	A,CM
		10	33130-300-671	SOCKET COMP., HEADLIGHT CORD	1	1	A,CM
		11	33153-375-671	RING, MOUNTING	1	1	A,CM
		12	33321-371-672	BEAM UNIT, SEALED (12V50/40W STANLEY)	1	1	A,CM
		13	33741-340-670	REFLECTOR, FR. REFLEX	2	2	A,CM
		14	33743-375-000	BASE, FR. REFLECTOR	2	2	A,CM
		15	61301-393-7712A	CASE, HEADLIGHT 4NH-14	1	1	A,CM
		16	61302-300-000	COLLAR, HEADLIGHT CASE	2	2	A,CM
		17	61303-336-000	WASHER, HEADLIGHT CASE	2	2	A,CM
		18	61304-292-000	COLLAR, HEADLIGHT SETTING	3	3	A,CM
		19	90120-377-000	BOLT, HEADLIGHT STAY	2	2	A,CM
		20	93500-03008-1A	SCREW, PAN, 3X8	2	2	A,CM
		21	93500-05016-0B	SCREW, PAN, 5X16	3	3	A,CM
		22	93901-14110	SCREW, TAPPING, 4X8	3	3	A,CM
		23	94101-10200	WASHER, PLAIN, 10MM	2	2	A,CM
		24	94111-05000	WASHER, SPRING, 5MM	3	3	A,CM

1978.09.10