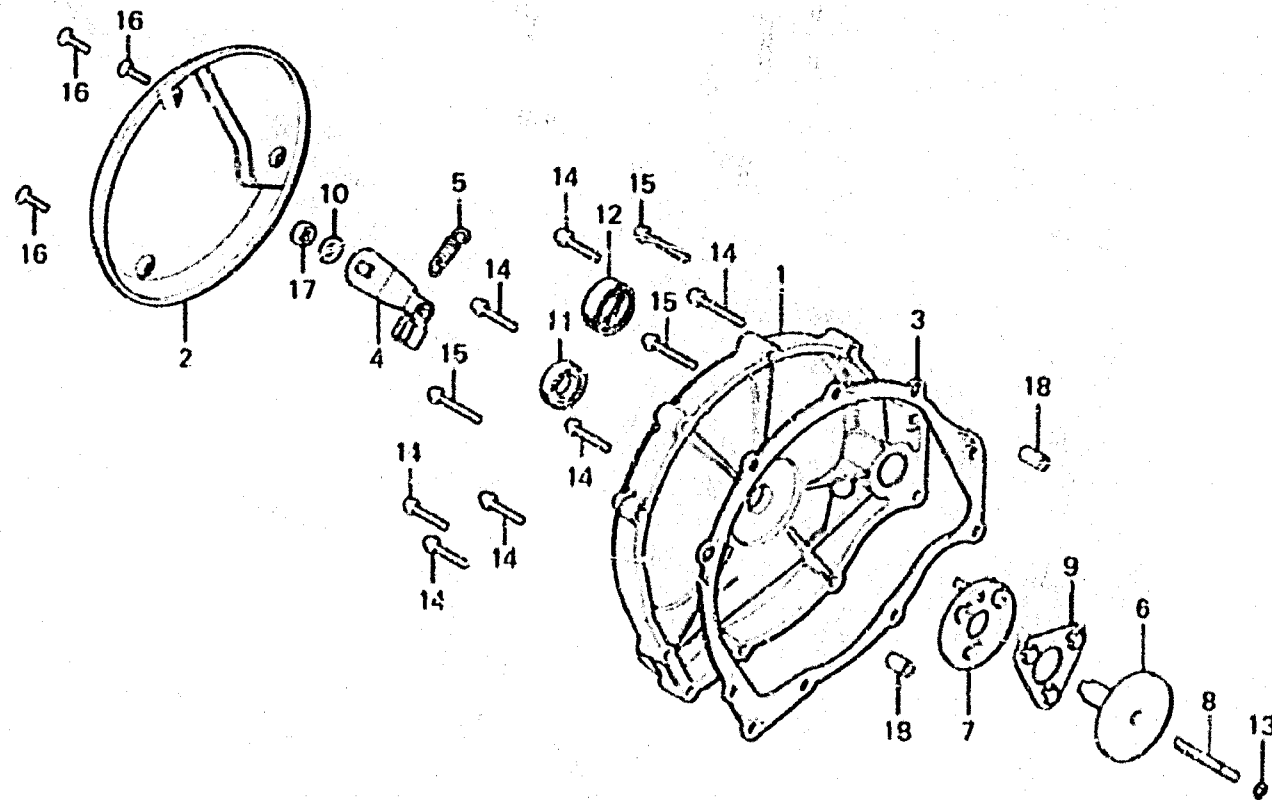


I 11

E-8

Clutch cover



0322-7

Service Item	F.R.T.	Ref. No.	Part No.	Description	Reqd. No. CB750 F2 F3	Serial No.	Area code
CLUTCH COVER	0.7	1	11342-410-010	COVER, CLUTCH	1 1		
CLUTCH LIFTER CAM and its related parts • 18 x 29 x 7 OIL SEAL	0.6	2	11348-392-000	COVER, CLUTCH ADJUSTING	1 1		
CLUTCH COVER GASKET	0.5	3	11396-300-060	GASKET, CLUTCH COVER	1 1		
CLUTCH LEVER	0.3	4	22810-300-000	LEVER COMP., CLUTCH	1 1		
CLUTCH ADJUST COVER	0.1	5	22815-300-000	SPRING, CLUTCH LEVER	1 1		
		6	22820-410-000	SHAFT, CLUTCH RELEASE	1	1001006	E, ED, F, J
					1	2611809	A, CH, DK, DP, U
					1	3100505	
			22820-410-010	SHAFT, CLUTCH RELEASE	1	1001007	E, ED, F, J
					1	2611810	A, CH, DK, DM, U
					1	3100506	
		7	22830-300-000	CAM COMP., CLUTCH LIFTER	1	1001006	E, ED, F, J
					1	2611809	A, CH, DK, DM, U
					1	3100505	
			22830-410-010	CAM COMP., CLUTCH LIFTER	1	1001007	E, ED, F, J
					1	2611810	A, CH, DK, DM, U
					1	3100506	
		8	22841-410-000	ROD, CLUTCH ADJUST	1 1		
		9	22860-300-006	RETAINER COMP., CLUTCH BALL	1 1		
		10	90402-822-000	WASHER, HEAD, 8MM	1 1		
		11	91202-216-003	OIL SEAL, 14X24X5	1 1		
		12	91204-286-003	OIL SEAL, 18X29X7	1 1		
			91204-286-005	OIL SEAL, 18X29X7	1 1		
		13	91301-283-005	O-RING, 5X2.4	1 1		
		14	93500-06028	SCREW, PAN, 6X28	7 7		
		15	93500-06035	SCREW, PAN, 6X35	3 3		
		16	93700-06016-02	SCREW, OVAL, 6X16	3 3		

1978.09.10