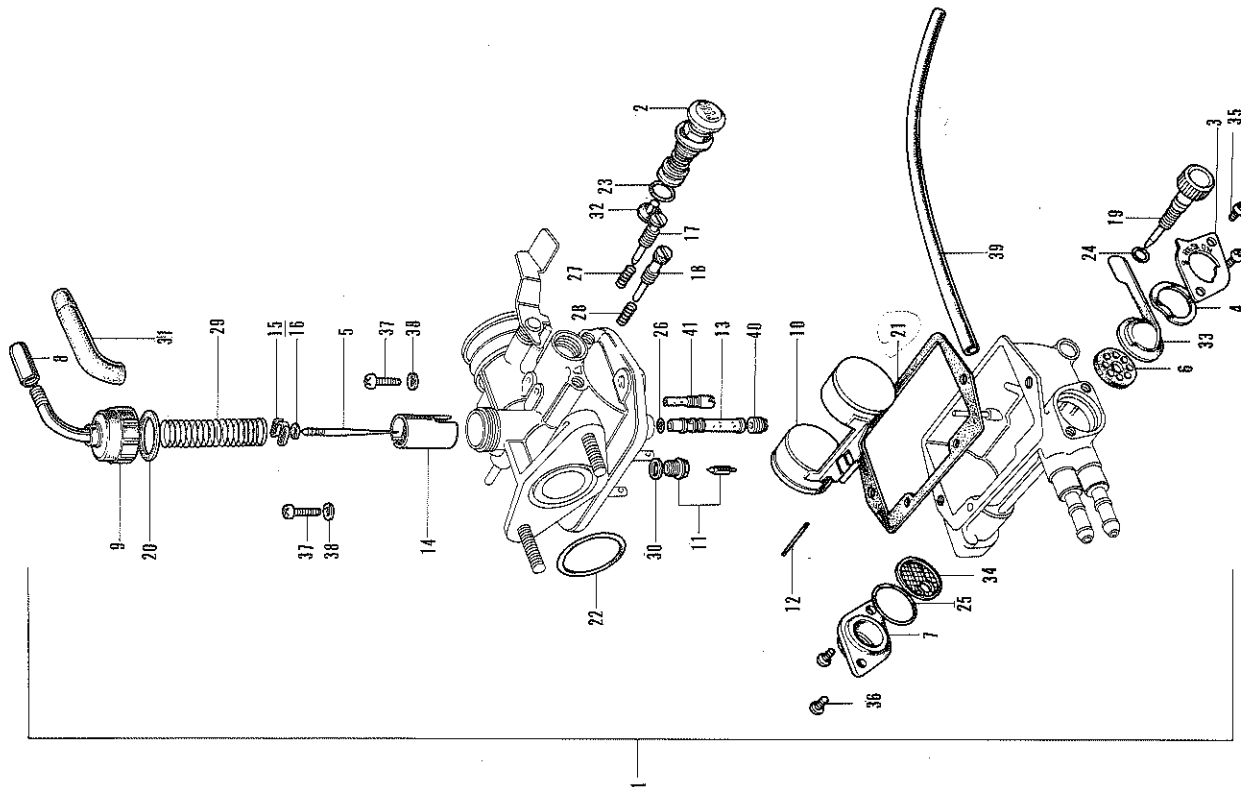


E-13 CARBURETOR (KEIHIN)



E-13 CARBURETOR (KEIHIN)

Ref. No.	Part No.	Description	Reqd. Qty.		No. Used on	
			A/C	9.0	From	To
1	16100-918-004	CARBURETOR ASSY.	1			
2	16110-077-004	BUTTON, cock	1			
3	16111-088-004	COVER, cock	1			
4	16113-001-004	SPRING, cock lever	1			
5	16114-918-004	NEEDLE, jet	1			
6	16115-001-004	PACKING, cock	1			
7	16116-088-004	CAP, fuel strainer	1			
8	16118-045-004	ADJUSTER, cable	1			
9	16119-076-004	TOP	1			
10	16122-202-004	FLOAT	1			
11	16125-011-004	VALVE-SET, float	1			
12	16126-011-004	PIN, float arm	1			
13	16133-102-004	JET, needle	1			
14	16141-077-004	VALVE, throttle	1			
15	16156-044-004	PLATE, needle clip	1			
16	16157-044-004	CLIP, pin	1			
17	16162-107-004	SCREW, air	1			
18	16163-217-004	SCREW, throttle stop	1			
19	16164-045-014	SCREW, drain	1			
20	16171-046-004	WASHER, top	1			
21	16172-088-004	WASHER, float chamber	1			
22	16173-250-004	O RING, 24x2.4	1			
23	16174-001-004	O RING, 7.8x1.9	1			
24	16174-045-004	O RING, 3.8x1.9	1			
25	16176-046-004	O RING, 18.6x2.4	1			
26	16177-551-004	O RING, 4.2x1.1	1			
27	16181-202-004	SPRING, air screw	1			
28	16182-011-004	SPRING, throttle stop screw	1			
29	16185-045-004	SPRING, throttle	1			
30	16186-040-004	WASHER, fiber, 7.2x0.5	1			
31	16194-045-004	CAP, cable	1			
32	16199-077-004	CAP, cock button rubber	1			
33	16953-088-004	LEVER, cock	1			
34	16957-028-000	SCREEN, fuel strainer	1			
35	93500-03005-0-A	SCREW, pan, 3x5	2			