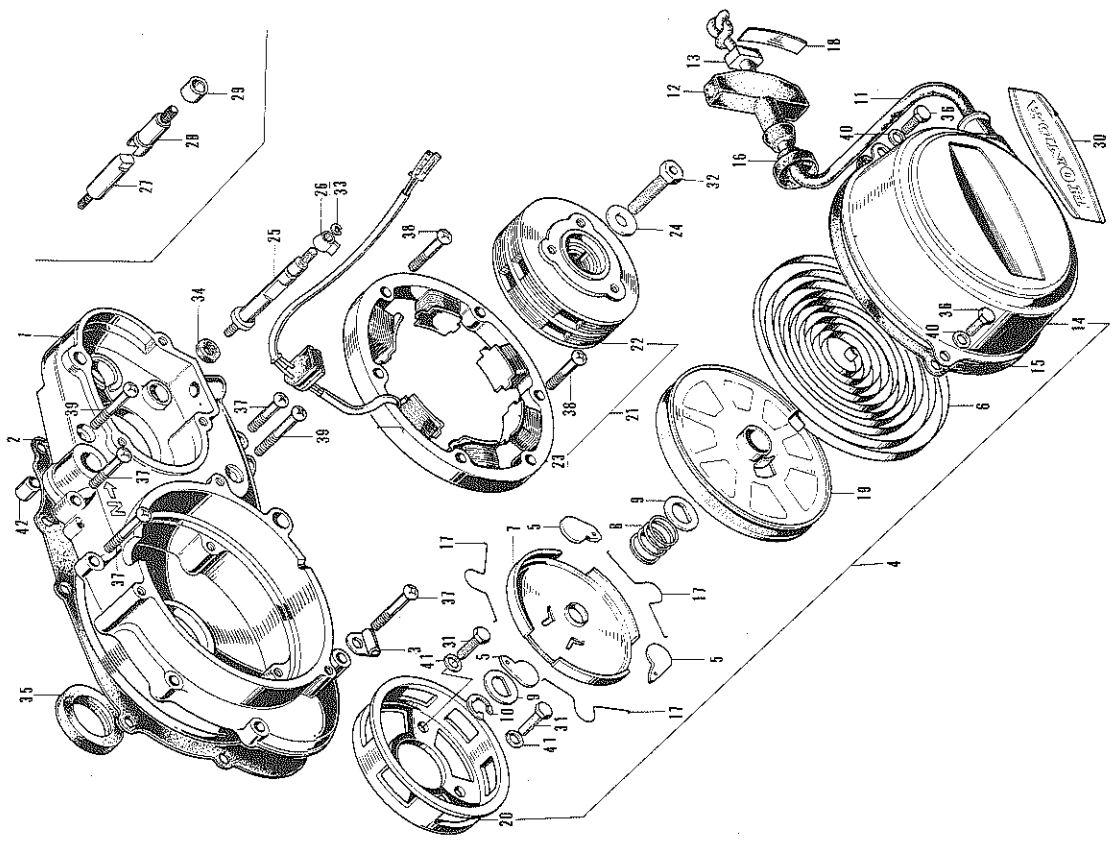


E-5 STARTER-DYNAMO-L. CRANKCASE COVER

E-5 STARTER-DYNAMO-L. CRANKCASE COVER

Ref. No.	Part No.	Description	Recd. No.		No. Used on
			A/C	9.0	
1	11341-918-000	COVER, L. crankcase	1		10777 ~
2	11341-918-010	COVER, L. crankcase	1		10777 ~
3	11395-918-000	GASKET, L. crankcase cover	1		
4	16236-045-000	CLIP, over flow pipe	1		
5	28400-918-000 A U	STARTER ASSY., recoil (Cloud silver)	1		
6	28401-918-000	RATCHET, starter	3		
7	28402-918-000	SPRING, recoil starter	1		
8	28403-918-000	PLATE, friction	1		
9	28404-918-000	SPRING, friction	1		
10	28405-918-000	WASHER	2		
11	28406-918-000	E-RING	1		
12	28407-918-000	ROPE, recoil starter	1		
13	28408-918-000	KNOB, starter	1		
14	28409-918-000	STOPPER, rope	1		
15	28410-918-000 A U	CASE, recoil starter	1		
16	28411-918-300	PACKING, recoil starter	1		
17	28412-918-000	RUBBER, boot	1		
18	28413-918-000	SPRING, set	3		
19	28414-918-000	TAPE, knob	1		
20	28420-918-000	PULLEY, recoil starter	1		
21	28430-918-000	PULLEY, starter	1		
22	31100-918-004	A. C GENERATOR ASSY., rotor type (NIPPON DENSO)	1		
23	31101-918-004	ROTOR (NIPPON DENSO)	1		
24	31102-918-004	STATOR (NIPPON DENSO)	1		
25	31105-028-000	WASHER, generator rotor setting	1		
26	35761-918-010	SHAFT, neutral indicator	1		
27	35762-918-020	INDICATOR, neutral	1		
28	35763-918-000	SHAFT A, neutral indicator	1		10777 ~
29	35764-918-000	SHAFT B, neutral indicator	1		10777 ~
30	87101-918-300	COLLAR, neutral indicator shaft	1		10777 ~
31	90002-918-000	EMBLEM, recoil starter (Superseded by 92000-06016-44)	1		
32	92000-06016-4J	BOLT, hex., 6x16	3		
33	90026-259-000	BOLT, rotor setting	1		
34	90605-230-000	CIR-CLIP, 5mm	1		
35	91201-035-010	OIL-SEAL, 12x21x4	1		
36	91201-071-000	OIL-SEAL, 20.8x35x8	1		
37	92000-06016	BOLT, hex., 6x16	3		
38	93500-06025	SCREW, pan, 6x26	7		
39	93500-06032	SCREW, pan, 6x32	3		
40	93500-06040	SCREW, pan, 6x40	2		
41	94101-06000	WASHER, plain, 6mm	3		
42	94301-10140	PIN, knock, 10x14	1		



I.A.