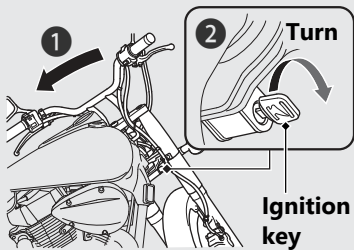


## Switches *(Continued)*

### Steering Lock

Lock the steering when parking to help prevent theft.

A U-shaped wheel lock or similar device is also recommended.



### Locking

- 1 Turn the handlebar all the way to the left.
- 2 Insert the key in the steering lock and turn it 180 degrees clockwise.
- 3 Remove the key.

### Unlocking

Insert the key and turn it 180 degrees counterclockwise.