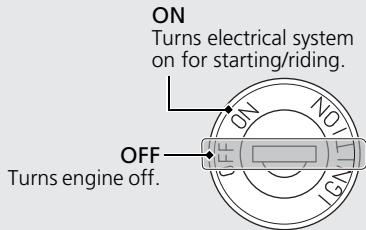


Ignition switch

Switches the electrical system on/off.

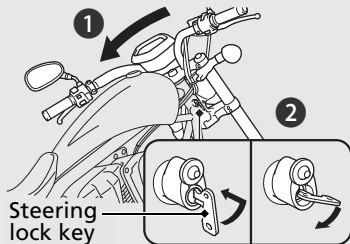
► Key can be removed when in the OFF position.



Steering Lock

Lock the steering when parking to help prevent theft.

A U-shaped wheel lock or similar device is also recommended.



Locking

- 1 Turn the handlebar all the way to the left.
- 2 Insert the steering lock key in the steering lock, turn the key 90 degrees counterclockwise. Push and turn the key clockwise.
 - Jiggle the handlebar if the lock is difficult to engage.
- 3 Remove the key.

Unlocking

Insert the steering lock key into the steering lock and turn it counterclockwise.