

# Engine Oil & Filter

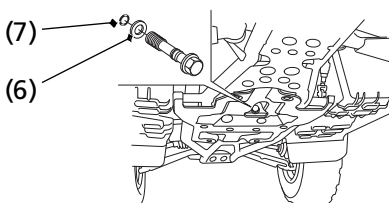
- Pour the drained oil into a suitable container and dispose of it in an approved manner (page 182).

## NOTICE

*Improper disposal of drained fluids is harmful to the environment.*

*Add Engine Oil:*

- Install a new sealing washer (6) onto the drain bolt.



**(6) drain bolt sealing washer**

**(7) O-ring**

- Apply a thin coat of oil to a new O-ring (7) with oil and install into the groove in the oil drain bolt.
  - Reinstall the engine oil drain bolt and tighten it to the specified torque:  
**18 lbf·ft (25 N·m , 2.5 kgf·m)**
  - Fill the crankcase with the recommended grade oil approximately:  
**3.1 US qt (2.9 ℓ)**
  - Reinstall the oil fill cap.
  - Start the engine and let it idle for 5 minutes.
  - Stop the engine and after 2–3 minutes, check the oil level. Make sure the oil is between the upper and lower level marks on the dipstick. If necessary, add more oil but do not overfill.
  - Reinstall the oil fill cap and dipstick.
  - Check that there are no oil leaks.
- If a torque wrench is not used for installation (7), see your dealer as soon as possible to verify proper assembly.