

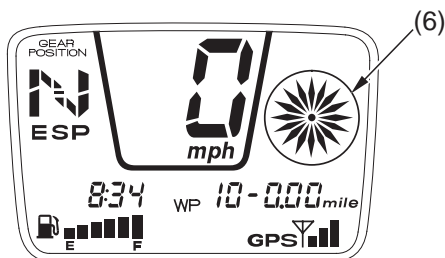
# GPS Mode

---

5. Within 5 seconds, to mark your present position, tap (do not hold) the GPS/WP button. (The waypoint will not be set unless the GPS/WP button is pressed a second time. Do not hold the GPS/WP button down. This will cause the system to transition to the advanced waypoint entry procedure.)

The direction to waypoint display (6) will light as shown in the illustration.

- In the 2D Navigation status, the calculated waypoint location may not be as accurate as 3D Navigation.



(6) direction to waypoint display

As soon as you start moving (one mph or faster), the direction to waypoint arrow will appear, pointing toward the selected waypoint location.