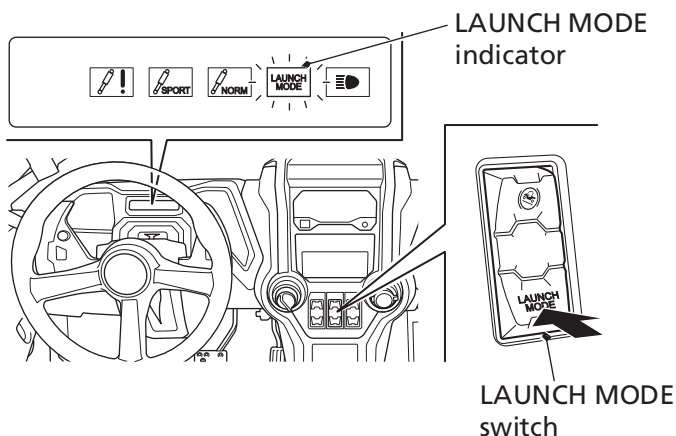


Basic Operation

4. Make sure the front wheels are pointing straight.
5. Press and hold the brake pedal, shift the shift select lever into the high-range (H) position (page 40).
6. Press and hold the LAUNCH MODE switch until the LAUNCH MODE indicator comes on.

The LAUNCH MODE indicator does not come on when

- the vehicle is not completely stopped.
- the shift position is not in the high-range (H).
- the brake pedal is not depressed firmly.
- the seat belt indicator blinks (the driver's seat belt is not latched).
- there is a problem with a vehicle system (the PGM-FI Malfunction Indicator Lamp (MIL) comes on.)
- engine is not at normal operating temperature (the coolant temperature gauge displays "Lo" or the high coolant temperature indicator comes on.
- the clutch temperature indicator blinks.



(cont'd)