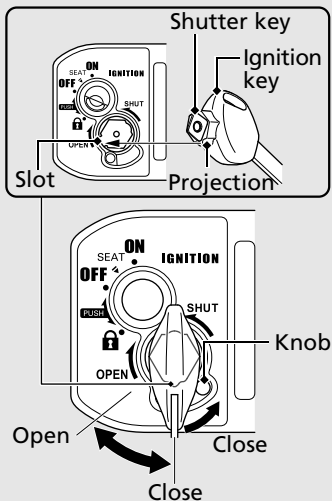


Switches *(Continued)*

Shutter

The ignition switch for this scooter is equipped with a shutter. After parking the scooter, close the shutter for theft prevention.



Close

- 1 Remove the ignition key from the ignition switch.
- 2 Align the projection of the shutter key with the slot of the shutter, and turn the shutter key counterclockwise.
 - ▶ You can also close the shutter by moving the knob counterclockwise without the shutter key.
- 3 Remove the key.

Open

Align the projection of the shutter key with the slot of the shutter, and turn the shutter key clockwise.