

# Vehicle Identification

---

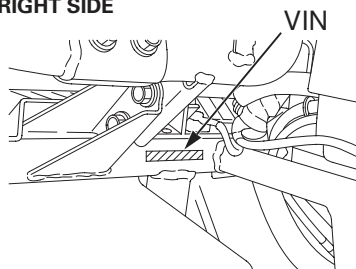
## Serial Numbers

The VIN, engine serial number, and key number may be required when ordering replacement parts. You may record these numbers in the Quick Reference section at the rear of this manual.

The VIN is stamped on the front side of the frame, located under the front hood, to the lower right of the battery box.

The engine number is stamped on the upper side of the rear crankcase.

**UNDER FRONT HOOD  
RIGHT SIDE**



**RIGHT REAR**

