

It is important to follow the tire recommendations (see [page 169](#)). The ABS computer works by comparing wheel speed.

Non-recommended tires can affect wheel speed and may confuse the ABS computer.

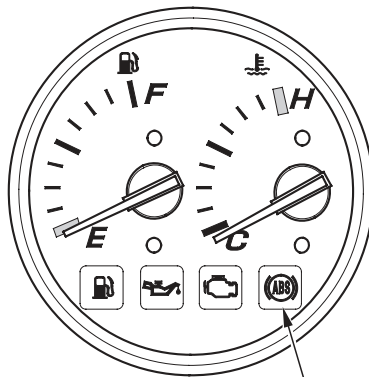
ABS does not function at very low speeds (approximately 5 mph (8 km/h) or below).

ABS does not function if the battery is discharged.

## ABS Indicator Light

(Models equipped with ABS)

Normally, this light comes on when the ignition is turned ON and goes off after starting to ride. If there is an ABS problem, the indicator light comes on and remains on or blinks. The ABS system does not operate when the ABS indicator light is on or blinking.



ABS indicator light