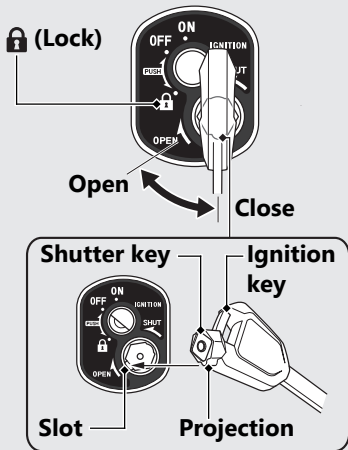


Switches *(Continued)*

Shutter

The ignition switch for this motorcycle is equipped with an automatic shutter. After parking the motorcycle, close the shutter for theft prevention.



The shutter will automatically close when you remove the ignition key at the **L** (Lock) position.

Also you can close the shutter manually.

Close

- ① Remove the ignition key from the ignition switch.
- ② Align the projection of the shutter key with the slot of the shutter, and turn the shutter key counterclockwise
- ③ Remove the key.

Open

Align the projection of the shutter key with the slot of the shutter, and turn the shutter key clockwise.