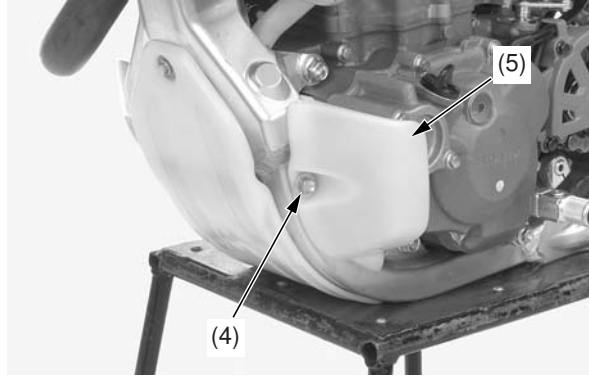


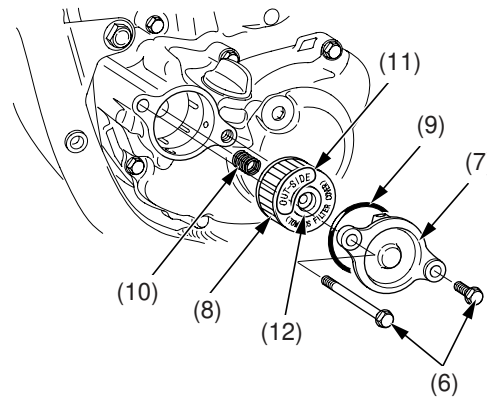
Engine Oil

7. Remove the bolt (4) and left engine guard (5).



- (4) bolt
(5) left engine guard

8. Remove the oil filter cover bolts (6) and oil filter cover (7).
9. Remove the oil filter (8) from the filter cover.
10. Check that the oil filter cover O-ring (9) is in good condition and replace it if necessary.



- (6) oil filter cover bolts
(7) oil filter cover
(8) oil filter
(9) oil filter cover O-ring
(10) spring
(11) "OUT-SIDE" mark
(12) rubber seal

11. Apply grease to the filter side of the spring end, then install the spring (10) into a new oil filter (8).
12. Position the spring against the engine crankcase and install a new oil filter with the "OUT-SIDE" mark (11) facing out, away from the engine. You should see the "OUT-SIDE" mark on the filter body, near the rubber seal (12).
Use a new genuine Honda oil filter or a filter of equal quality specified for your model.

NOTICE

If the oil filter is not installed properly, it will cause serious engine damage.

13. Apply engine oil to the O-ring and install it to the oil filter cover.
14. Install the oil filter cover being careful not to damage the O-ring, then tighten the oil filter cover bolts to the specified torque:
10 N·m (1.0 kgf·m, 7 lbf·ft)
15. Install the left engine guard and bolt, then tighten it.

16. Fill the crankcase with the recommended oil.
Capacity: 0.70 ℓ (0.74 US qt, 0.62 Imp qt) at oil and filter change
0.67 ℓ (0.71 US qt, 0.59 Imp qt) at oil change
17. Install the engine oil filler cap/dipstick.
18. Check the engine oil level by following the steps in *Checking & Adding Oil* (page 44).