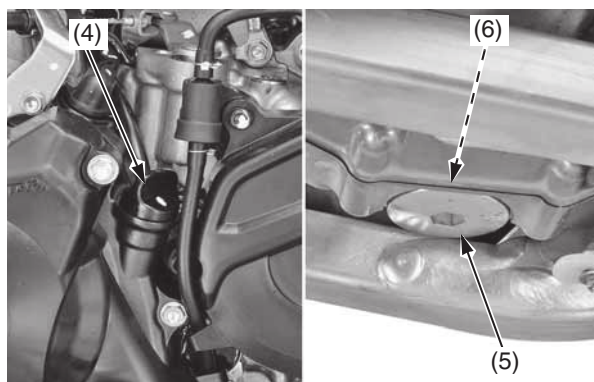


- Place an oil drain pan under the engine to catch the oil. Then remove the engine oil drain bolt (5) and O-ring (6).
- After the oil has drained, apply engine oil to the drain bolt threads, seating surface and a new O-ring, then install the O-ring on the drain bolt and tighten the drain bolt to the specified torque:
13 lbf-ft (18 N·m, 1.8 kgf·m)

Pour the drained oil into a suitable container and dispose of it in an approved manner (page 160).

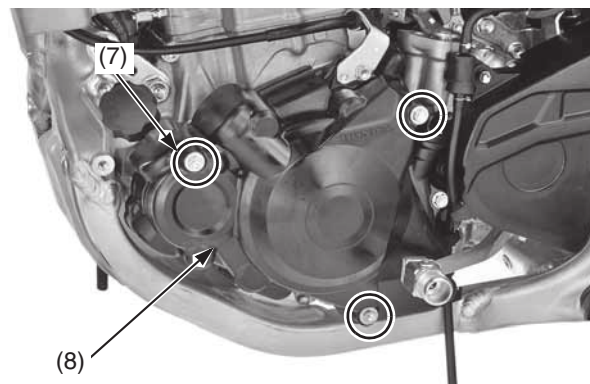
NOTICE

Improper disposal of drained fluids is harmful to the environment.



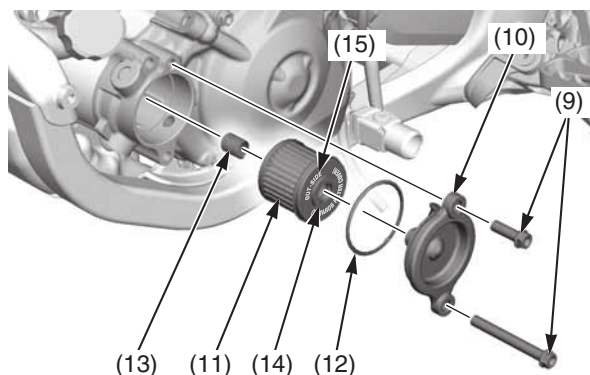
- (4) engine oil fill cap/dipstick
(5) engine oil drain bolt
(6) O-ring (new)

- (Off-Road Use)
It is recommended to replace the oil and filter every 8 races or about every 30.0 hours. However, if you replace only the oil before the recommended interval, see page 36.
- Remove the left crankcase over cover bolts (7) and over cover (8).



- (7) bolts
(8) over cover

- Remove the oil filter cover bolts (9) and oil filter cover (10).
- Remove the oil filter (11), O-ring (12) and spring (13).



- (9) oil filter cover bolts
(10) oil filter cover
(11) oil filter
(12) O-ring
(13) spring
(14) rubber seal
(15) "OUT-SIDE" mark

NOTICE

Using the wrong oil filter may result in leaks or engine damage.

- Apply grease to the filter side of the spring end, then install the spring into a new oil filter.

- Position the spring against the engine crankcase and install a new oil filter with the rubber seal (14) facing out, away from the engine. You should see the "OUT-SIDE" mark (15) on the filter body, near the seal.
Use a new Honda Genuine oil filter or a filter of equal quality specified for your model.

NOTICE

If the oil filter is not installed properly, it will cause serious engine damage.

- Apply engine oil to a new O-ring and install it to the oil filter cover.
- Install the oil filter cover being careful not to damage the O-ring, then tighten the oil filter cover bolts to the specified torque:
7 lbf-ft (10 N·m, 1.0 kgf·m)
- Install the left crankcase over cover, then tighten the over cover bolts to the specified torque:
7 lbf-ft (10 N·m, 1.0 kgf·m)
- Install the engine guard, then tighten the engine guard A bolts/washers and B bolt/washer to the specified torque:
7 lbf-ft (10 N·m, 1.0 kgf·m)
- Fill the crankcase with the recommended oil.
Capacity: 1.22 US qt (1.15 ℓ)
after draining and filter change
1.16 US qt (1.10 ℓ)
after draining

- Install the engine oil fill cap/dipstick.
- Check the engine oil level by following the steps in *Checking & Adding Oil* (page 70).

Pour the drained oil into a suitable container and dispose of it in an approved manner (page 160).

NOTICE

Improper disposal of drained fluids is harmful to the environment.