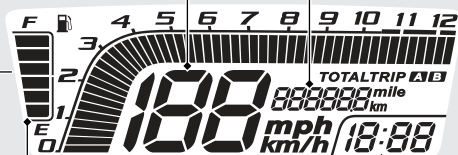


Odometer [TOTAL] & Tripmeter[TRIP A/B]

[SEL] button switches between the odometer and tripmeters.

- Odometer: Total distance ridden.
When "-----" is displayed, go to your dealer for service.
- Tripmeter: Distance ridden since tripmeter was reset (press and hold **[SET]** button to reset to 0.0 km/mile at the tripmeter display).
When "----.-" is displayed, go to your dealer for service.

Clock (12-hour display)**Speedometer****Fuel gauge**

Remaining fuel when only 1st (E) segment starts flashing:

approximately 0.42 US gal (1.6 L)

If the fuel gauge indicator flashes in a repeat pattern or turns off: **➡ P.90**

