

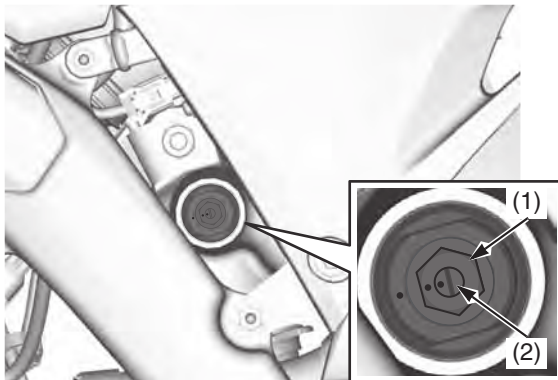
## Rear Suspension Damping

### Compression Damping

Compression damping may be adjusted in two stages with separate adjusters.

The high speed compression damping adjuster (1) is effective when damping adjustment is desired for high speed operation. The low speed compression damping adjuster (2) should be used when damping adjustment is desired at relatively low speeds.

- When adjusting the compression damping adjusters, make sure to use the proper size tool to avoid damage.
- Both the high and low speed compression damping can be increased by turning the appropriate adjuster clockwise.
- Adjust the high speed compression damping adjuster in 1/4 turn increments.
- Be sure the low speed compression damping adjuster is firmly located in a detent, and not between positions.



(1) high speed compression damping adjuster  
(2) low speed compression damping adjuster

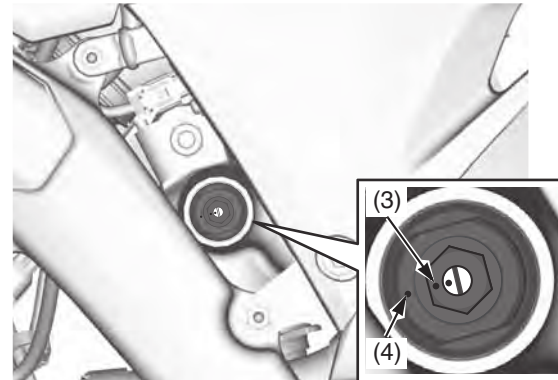
### High Speed Damping:

The high speed damping can be adjusted by turning the hexagonal portion of the compression damping adjuster.

The high speed compression damping has 3 1/2 turn or more.

To adjust to the standard position:

1. Turn the adjuster clockwise (harder) until it will no longer turn (lightly seats).
2. Turn the adjuster counterclockwise (softer) 3 1/4 – 3 3/4 turns and adjust it until the punch mark (3) on the adjuster and the punch mark (4) on the adjuster body are aligned.



(3) high speed compression damping adjuster punch mark  
(4) adjuster body punch mark

### Low Speed Damping:

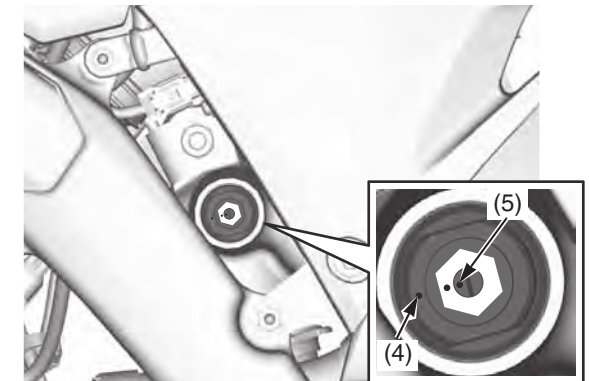
The low speed damping can be adjusted by turning the center screw of the compression damping adjuster.

The low speed compression damping adjuster has 13 clicks or more.

Turning the adjuster one full turn clockwise advances the adjuster 4 clicks.

To adjust to the standard position:

1. Turn the adjuster clockwise (harder) until it will no longer turn (lightly seat). Turn the adjuster counterclockwise (softer) until it clicks. This click is position 1.
2. Set the adjuster position 11 clicks and adjust it until the punch mark (5) on the adjuster and the punch mark (4) on the adjuster body are aligned.



(4) adjuster body punch mark  
(5) low speed compression damping adjuster punch mark

(cont'd)