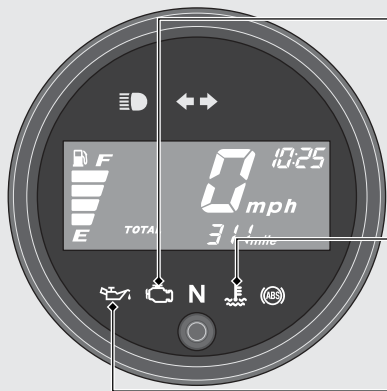



# Indicators

If one of these indicators does not come on when it should, have your dealer check for problems.



## **PGM-FI (Programmed Fuel Injection) malfunction indicator lamp (MIL)**

Comes on briefly when the ignition switch is turned to the ON position with the engine stop switch in the  (Run) position.


**If it comes on while engine is running:**

 **P.95**



## **High coolant temperature indicator**

Comes on briefly when the ignition switch is turned to the ON position.

**If it comes on while riding:**  **P.94**



## **Low oil pressure indicator**

Comes on when the ignition switch is turned to the ON position. Goes off when the engine starts.

**If it comes on while engine is running:**

 **P.95**