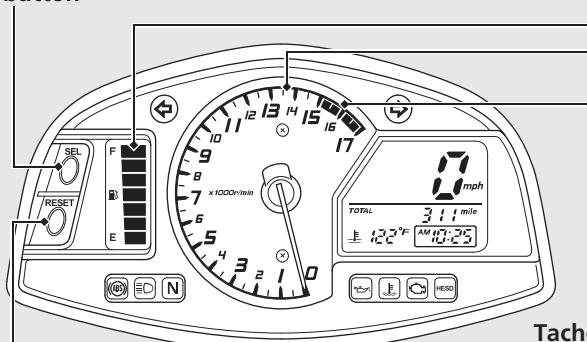


Instruments

SEL button



Tachometer

NOTICE

Do not operate the engine in the tachometer red zone. Excessive engine speed can adversely affect engine life.

RESET button

RESET button

Press RESET button to change the speed and mileage units ("mph" & "mile" / "km/h" & "km") for the speedometer, odometer, and tripmeter with the display in the tripmeter A.

(USA only)

Press RESET button to change the coolant temperature unit ("°F" / "°C") for the coolant temperature gauge with the display in the tripmeter B.

Tachometer red zone

(excessive engine rpm range)