

REV (Tachometer red zone) indicator setting

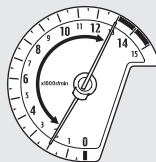
To set the REV indicator activation

The activation revolution can be selected from the following range.

2,000-to-13,000 rpm

- 1 Press and hold **[A]** button, turn the ignition switch ON. Keep **[A]** button pressed in until the tachometer needle moves to the setup revolutions.
- 2 Press **[A]** button, until the tachometer needle moved to the desired revolution.
 - ▶ The needle is moves by 500 rpm, each time the button is pressed.
 - ▶ The needle is moves by 1,000 rpm, when the button is pressed and held.

- ▶ As the revolution goes beyond the allowable range, the needle will return to 2,000 rpm.



- 3 Press **[B]** button, and proceed to the indication pattern selection.

To select the REV indicator indication pattern

Press **[A]** button to select one of 9 indication patterns.

To end the selection, press **[B]** button.