



**NOTICE**

Headlights stay on after the engine is stopped by the Idling Stop system.

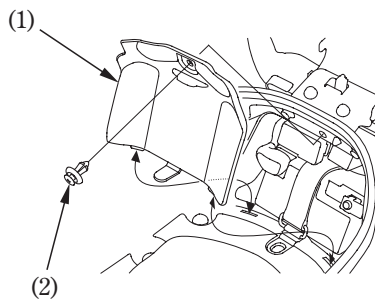
The battery may discharge and you may not be able to restart engine. When the battery is weak, switch the Idling Stop switch to **"IDLING"** and do not to use the Idling Stop system. See your Honda dealer to check the battery.

See your Honda dealer for checking the battery as specified in the maintenance schedule (page 90 ).



**Removal:**

1. Make sure the ignition switch is OFF.
2. Open the seat (page 47 ).
3. Remove the battery cover (1) by removing the clip (2).



- (1) Battery cover
- (2) Clip

