

Starting Procedure

To restart a warm engine, follow the procedure for “High Air Temperature.”

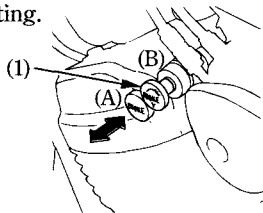
Normal Air Temperature

$10^{\circ} - 35^{\circ}\text{C}$ ($50^{\circ} - 95^{\circ}\text{F}$)

1. Pull the choke knob (1) up all the way to Fully ON (A), if the engine is cold.
2. Start the engine, leaving the throttle closed.

NOTE:

- * Do not open the throttle when starting the engine with the choke ON. This will lean the mixture, resulting in hard starting.



(1) Choke knob

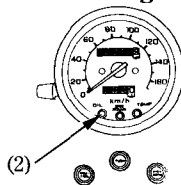
(A) Fully ON

(B) Fully OFF

3. Immediately after the engine starts, operate the choke knob (1) to keep fast idle.
4. About a half minute after the engine starts, push the choke knob (1) down all the way to Fully OFF (B).
5. If idling is unstable, open the throttle slightly.

CAUTION:

- * **The red low oil pressure indicator should go off a few seconds after the engine starts. If the light stays on, stop the engine immediately and check engine oil level. Operating the engine with insufficient oil pressure can cause serious engine damage.**



(2) Low oil pressure indicator