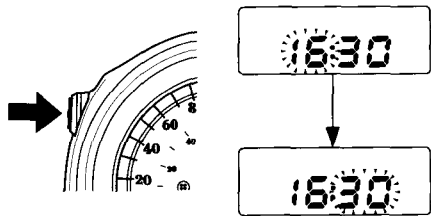
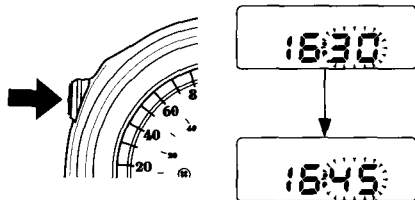


4. Push and hold the button for more than 2 seconds. The minute display will start flashing.



5. To set the minute, push the button until the desired minute. The minute display will return to "00" when "60" is reached without affecting the hour display.

- The time advances by one minute, each time the button is pushed.



6. To end the adjustment, push and hold the button for more than 2 seconds or turn the ignition switch OFF. The display will stop flashing automatically and the adjustment will be cancelled if the button is not pushed for about 30 seconds.