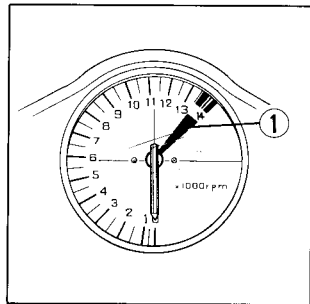


Tachometer Red Zone

CAUTION:

- Never allow the tachometer needle to enter the red zone (1), even after the engine has been broken in.
- Be careful when blipping or accelerating in the 1st or 2nd gear as the needle will enter the red zone easily.

The red zone indicates the maximum engine speed limit and running the engine in this range will adversely affect its service life.



Tripmeter

Use the tripmeter to calculate mileage on trips. Reset to zero with the knob (2).

