

Installation Notes:

Position the front wheel between the fork legs and insert the axle from the left side, through the left fork leg and when hub.

CAUTION:

*** When installing the wheel, carefully fit the left brake disc between the brake pads to avoid damaging the pads.**

Fit the caliper over the disc, taking care not to damage the brake pads. Install the caliper fixing bolts and tighten to a torque of:

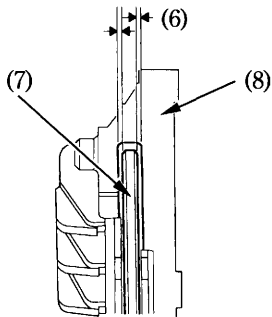
27 N·m (2.7 kg·m , 20 lb-ft)

Measure the clearance (6) between each surface of the left brake disc (7) and the left caliper holder (8) with a 0,7 mm (0,028 in) feeler gauge (9) (see illustration).

If the gauge inserts easily, tighten the right and left axle pinch bolts (3) to the specified torque.

Axle pinch bolt torque :

22 N·m (2.2 kg·m , 16 lb-ft)



(6) Clearance
(7) Brake disc

(8) Caliper holder