

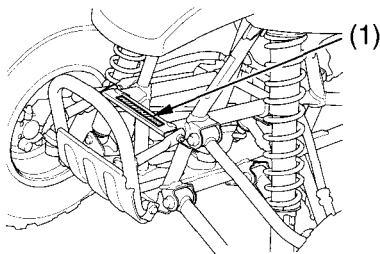
Vehicle Identification

Serial Numbers

The frame and engine serial numbers and key number may be required when ordering replacement parts. You may record these numbers in the Quick Reference section at the rear of this manual.

The frame number (1) is stamped on the front of the frame.

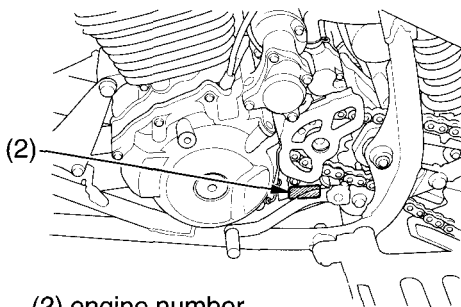
FRONT



(1) frame number

The engine number (2) is stamped on the left side of the crankcase.

LEFT SIDE



(2) engine number