

## STARTING THE ENGINE

### Preparation

1. Select a level surface and lock the parking brake (page 22) before starting the engine.
2. Turn the fuel cap vent lever (1), fuel valve (2) and ignition switch (3) to ON.
3. Make sure the engine stop switch (4) is at RUN.
4. Make sure that the transmission is in neutral by depressing the gearshift pedal and checking that the neutral indicator is at N and that the neutral indicator lamp lights.

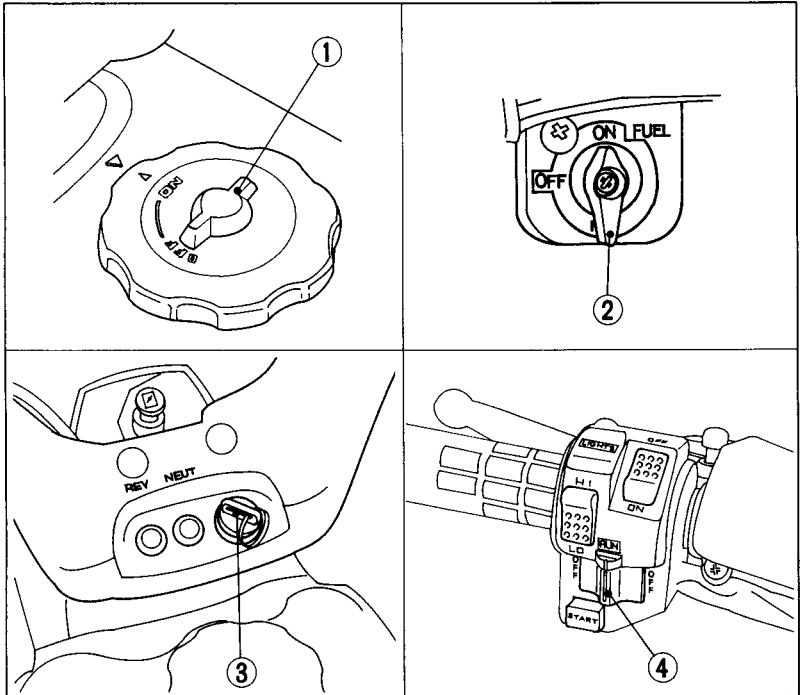


Fig. 3-8

(1) Vent lever  
(2) Fuel valve

(3) Ignition switch  
(4) Engine stop switch