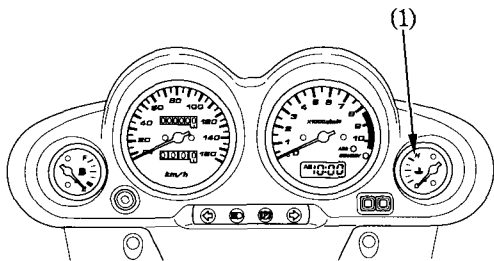


Coolant Temperature Gauge (1)

When the needle begins to move above the C (Cold) mark, the engine is warm enough for the motorcycle to be ridden. The normal operating temperature range is within the section between the H and C marks. If the needle reaches the H (Hot) mark, stop the engine and check the reserve tank coolant level. Read pages 24 – 25 and do not ride the motorcycle until the problem has been corrected.

CAUTION:

* Exceeding maximum running temperature may cause serious engine damage.



(1) Coolant temperature gauge