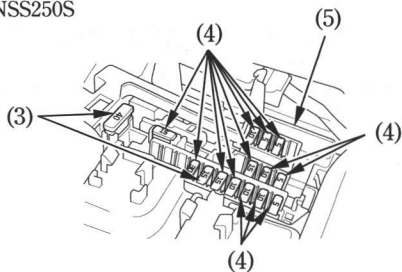
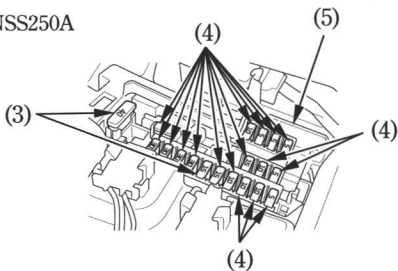


NSS250S



NSS250A



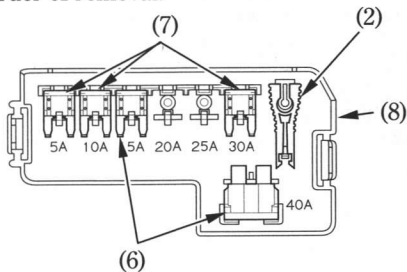
(3) Main fuses  
(4) Circuit fuses

(5) Fuse box

4. Using the fuse remover (2), pull the old fuse out and install a new fuse. The main fuses (3) and circuit fuses (4) are located in the fuse box (5).

The spare main fuses (6) and spare fuses (7) are located on reverse side of the fuse box cover (8).

5. Install the remaining parts in the reverse order of removal.



(2) Fuse remover  
(6) Spare main fuses

(7) Spare fuses  
(8) Fuse box cover