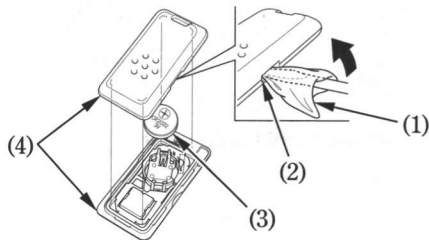


To replace the battery:

1. With the ON/OFF switch facing down, remove the side facing you while keeping hold of the main body.
2. Dismantle by inserting a coin or a flat head screwdriver covered with a protective cloth (1) into the slit (2) on the right side of the card key body.
3. Replace the old battery with a new battery (3) with the + side facing up.
4. Snap the two halves of the card key body (4) back together.



(1) Protective cloth

(2) Slit

(3) Battery

(4) Card key body

- Avoid damage to the Honda smart card key body by using a protective cloth.
- Place the battery properly with the + side up.
- Do not touch the circuit or terminal. This may cause problems.
- Be careful to avoid scratching the waterproof covering or allowing dust to enter.
- Do not forcibly replace the battery.