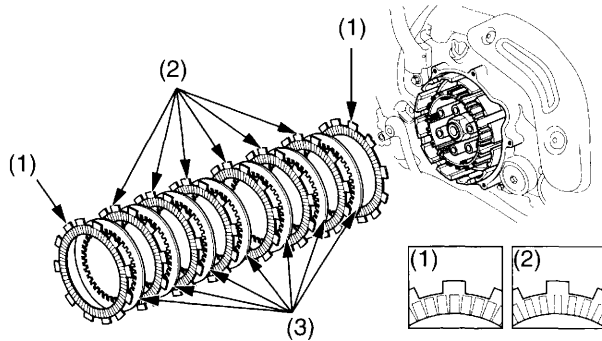


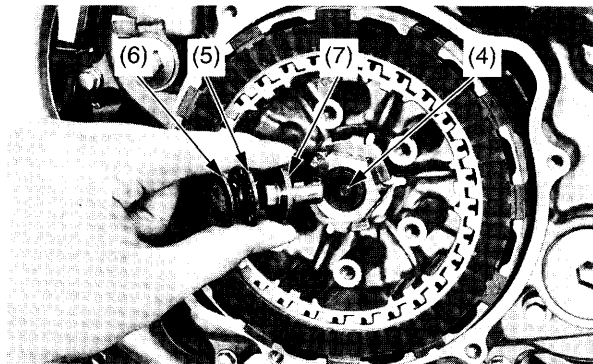
Clutch Disc/Plate Installation

1. Coat the clutch disc A (1), B (2) and plates (3) with engine oil.
2. Starting and ending with the two clutch disc A, alternately install the six clutch disc B and seven clutch plates.



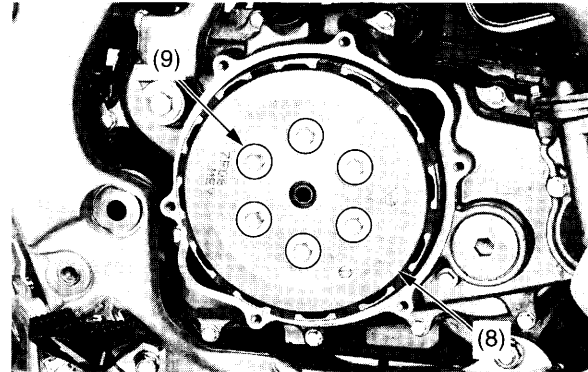
- (1) clutch disc A
 (2) clutch disc B
 (3) clutch plates

3. Apply grease to the clutch lifter rod (4).
4. Insert the clutch lifter rod into the mainshaft.
5. Apply engine oil to the needle bearing (5) and washer (6) and install them to the clutch lifter (7).
6. Install the clutch lifter onto the rod.



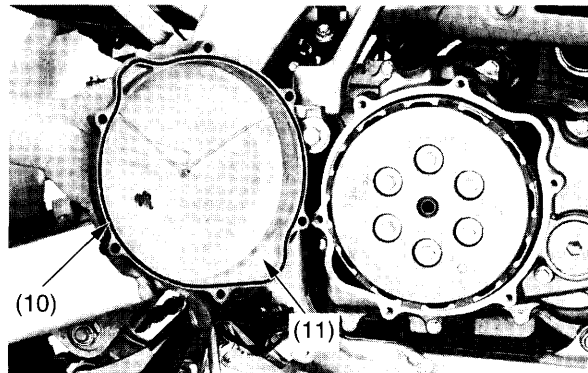
- (4) clutch lifter rod
 (5) needle bearing
 (6) washer
 (7) clutch lifter

7. Install the clutch pressure plate (8).
8. Install the six clutch springs and bolts (9).
9. Tighten the bolts in a crisscross pattern in two or three steps, to the specified torque:
 9 lbf-ft (12 N-m, 1.2 kgf-m)



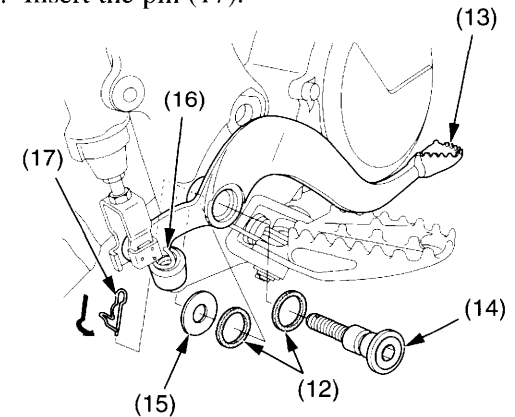
- (8) clutch pressure plate
 (9) clutch spring bolts/springs

10. Apply oil to a new O-ring (10) and install it in the groove of the clutch cover (11).
11. Install the clutch cover by tightening the six clutch cover bolts in a crisscross pattern in two or three steps to the specified torque:
 7 lbf-ft (10 N-m, 1.0 kgf-m)



- (10) O-ring
 (11) clutch cover

12. Lubricate the dust seals (12), rear brake pedal (13) pivot and pivot bolt (14) with Pro Honda White Lithium Grease or equivalent.
13. Install the dust seals into the rear brake pedal.
14. Install the pivot bolt with the washer (15) and tighten the pivot bolt to the specified torque:
 27 lbf-ft (36 N-m, 3.7 kgf-m)
 Connect the brake pedal return spring (16) if it is removed.
15. Insert the pin (17).



- (12) dust seals
 (13) rear brake pedal
 (14) pivot bolt
 (15) washer
 (16) brake pedal return spring
 (17) pin

16. Fill the crankcase with transmission oil (page 47).