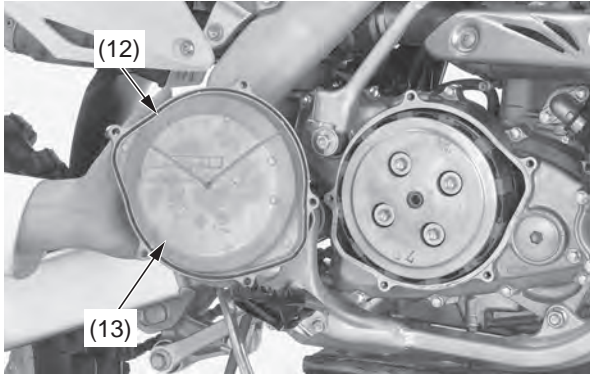


# Clutch System

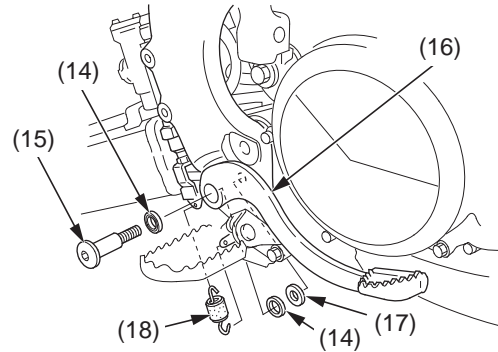
9. Apply oil to a new O-ring (12) and install it in the groove of the clutch cover (13).
10. Install the cover by tightening the five cover bolts in a crisscross pattern in two or three steps to the specified torque:  
10 N·m (1.0 kgf·m, 7 lbf·ft)



(12) O-ring (new)      (13) clutch cover

11. Lubricate the dust seals (14) and rear brake pedal pivot bolt (15) with urea based multipurpose grease or equivalent.
12. Apply locking agent to the brake pedal pivot bolt threads.
13. Install the dust seals into the rear brake pedal (16).

14. Install the pivot bolt with the washer (17) and tighten the pivot bolt to the specified torque:  
**36 N·m (3.7 kgf·m, 27 lbf·ft)**  
Connect the brake pedal return spring (18) if it is removed.



- (14) dust seals
- (15) brake pedal pivot bolt
- (16) rear brake pedal
- (17) washer
- (18) brake pedal return spring

15. Fill the crankcase with transmission oil (page 57).