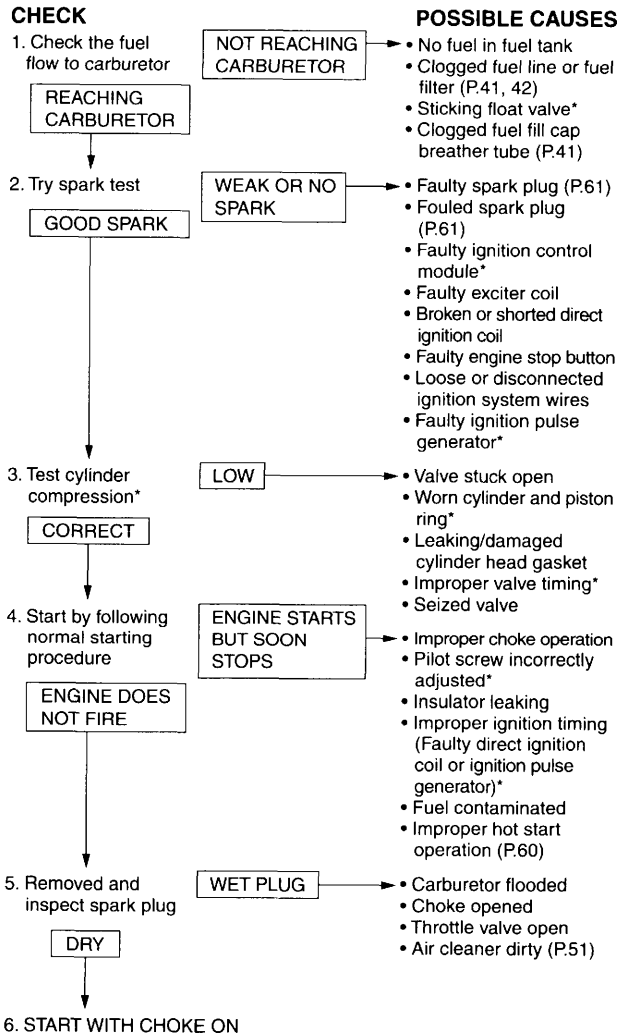


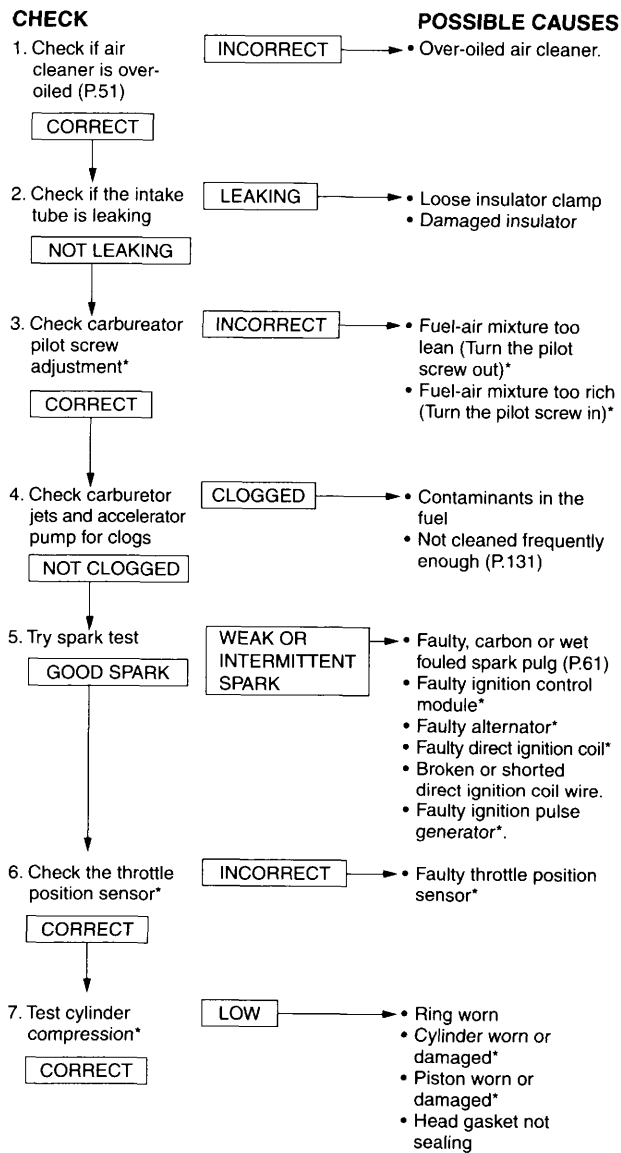
Troubleshooting

The items that are serviceable using this Manual are followed by the page number reference in parenthesis. The items that require use of the Honda Service Manual are followed by an asterisk (*).

ENGINE DOES NOT START OR IS HAND TO START



POOR PERFORMANCE AT LOW AND UNSTABLE IDLE SPEED



POOR PERFORMANCE AT HIGH SPEED

