

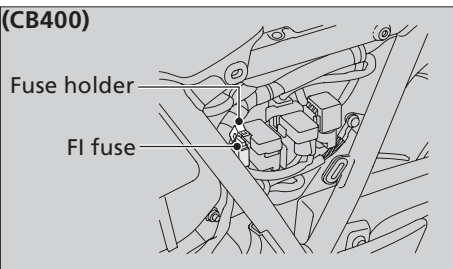
Electrical Trouble ► Blown Fuse

FI Fuse

(CB400)

1. Remove the left side cover. ►P.46
2. Open the fuse holder.
3. Pull out the FI fuse and check for a blown fuse. Always replace a blown fuse with a spare of the same rating.
 - Spare fuse is provided in the fuse box.
►P.90
4. Close the fuse holder.
5. Install the left side cover.

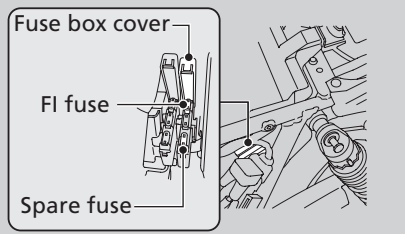
(CB400)



(CB400A)

1. Remove the left side cover. ►P.46
2. Open the fuse box cover located beside the left rear suspension.
3. Pull out the fuse and check for a blown fuse. Always replace a blown fuse with a spare of the same rating.
4. Close the fuse box cover.
5. Install the left side cover.

(CB400A)



NOTICE

If a fuse fails repeatedly, you likely have an electrical problem. Have your motorcycle inspected by your dealer.