

Ignition Switch

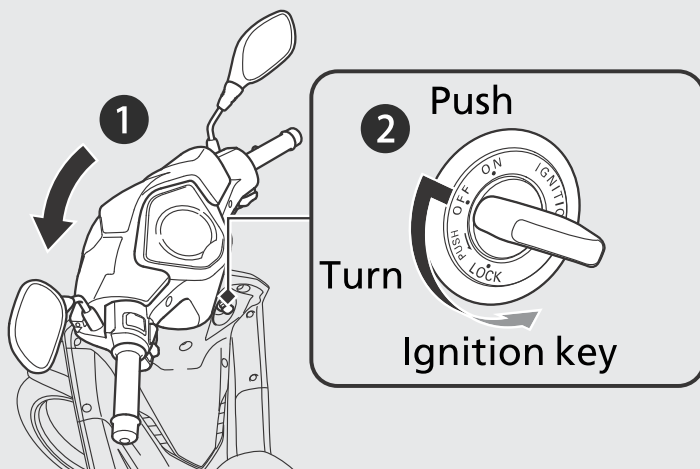
Switches the electrical system on/off, locks the steering.

- ▶ Key can be removed when in the OFF or LOCK position.

Steering Lock

Lock the steering when parking to help prevent theft.

A U-shaped wheel lock or similar device is also recommended.

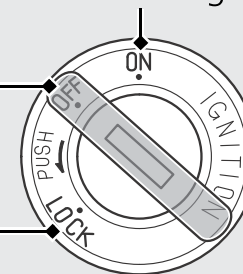


ON

Turns electrical system on for starting/riding.

OFF
Turns engine off.

LOCK
Locks steering.



Locking

- 1 Turn the handlebars all the way to the left or right.
- 2 Push the key down, and turn the ignition switch to the LOCK position.
 - ▶ Jiggle the handlebars if the lock is difficult to engage.
- 3 Remove the key.

Unlocking

Insert the key and turn the ignition switch to the OFF position.